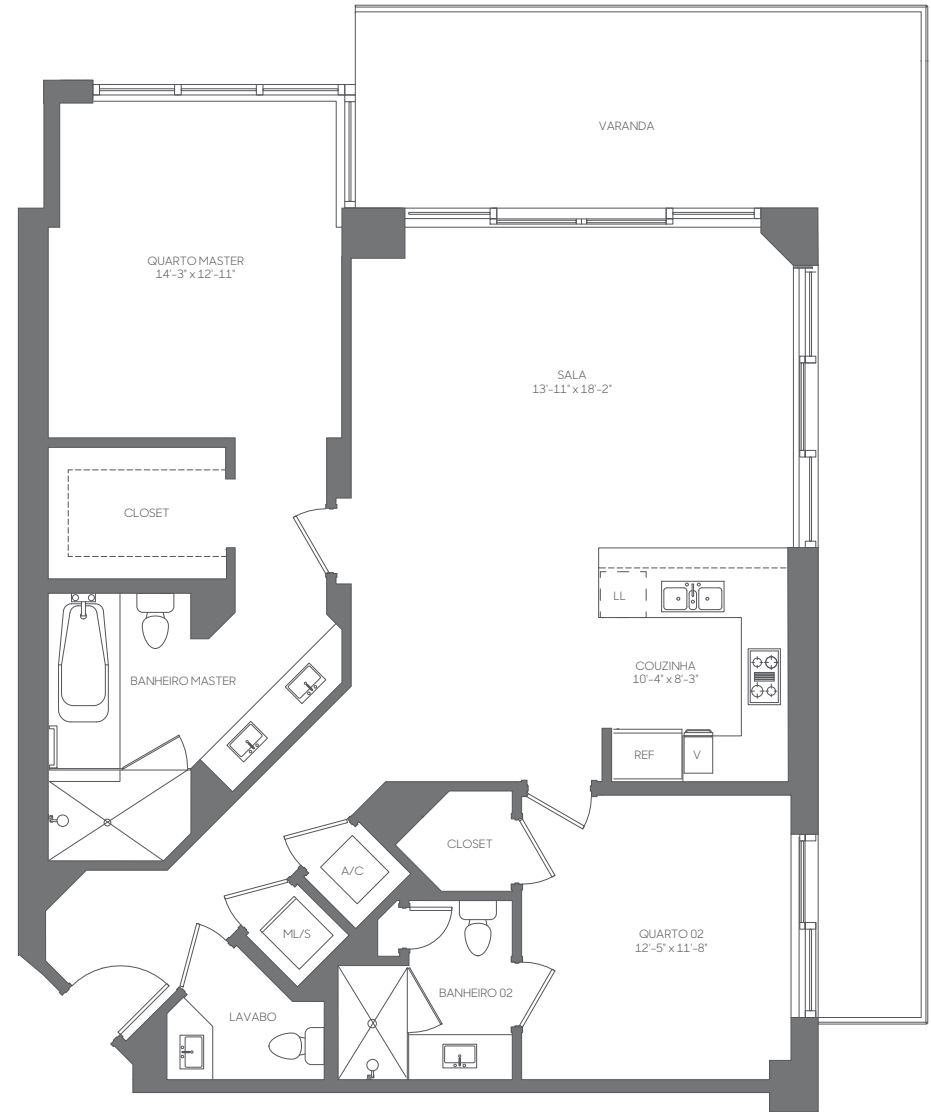
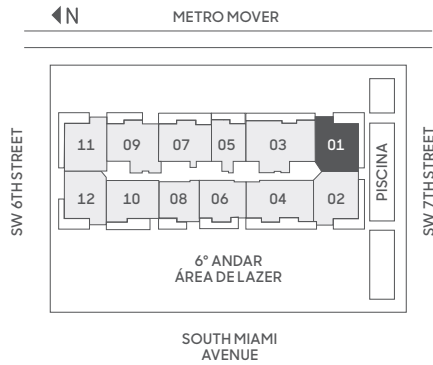




01
LINHA

2 QUARTOS | 2,5 BANHEIROS
ANDARES: 12, 14-36

RESIDÊNCIA (12, 14-20)	1,400 sq. ft.	130 sq. mt.
RESIDÊNCIA (21-32)	1,391 sq. ft.	129 sq. mt.
RESIDÊNCIA (33-36)	1,385 sq. ft.	128 sq. mt.
VARANDA	280-411 sq. ft.	26-38 sq. mt.
TOTAL	1,665-1,802 sq. ft.	154-167 sq. mt.



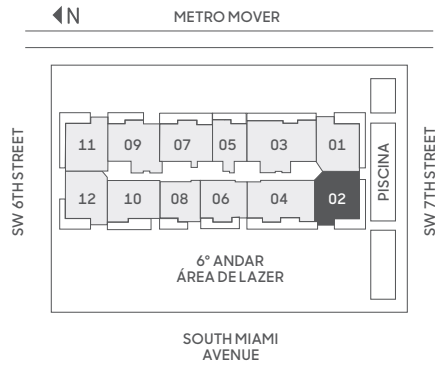
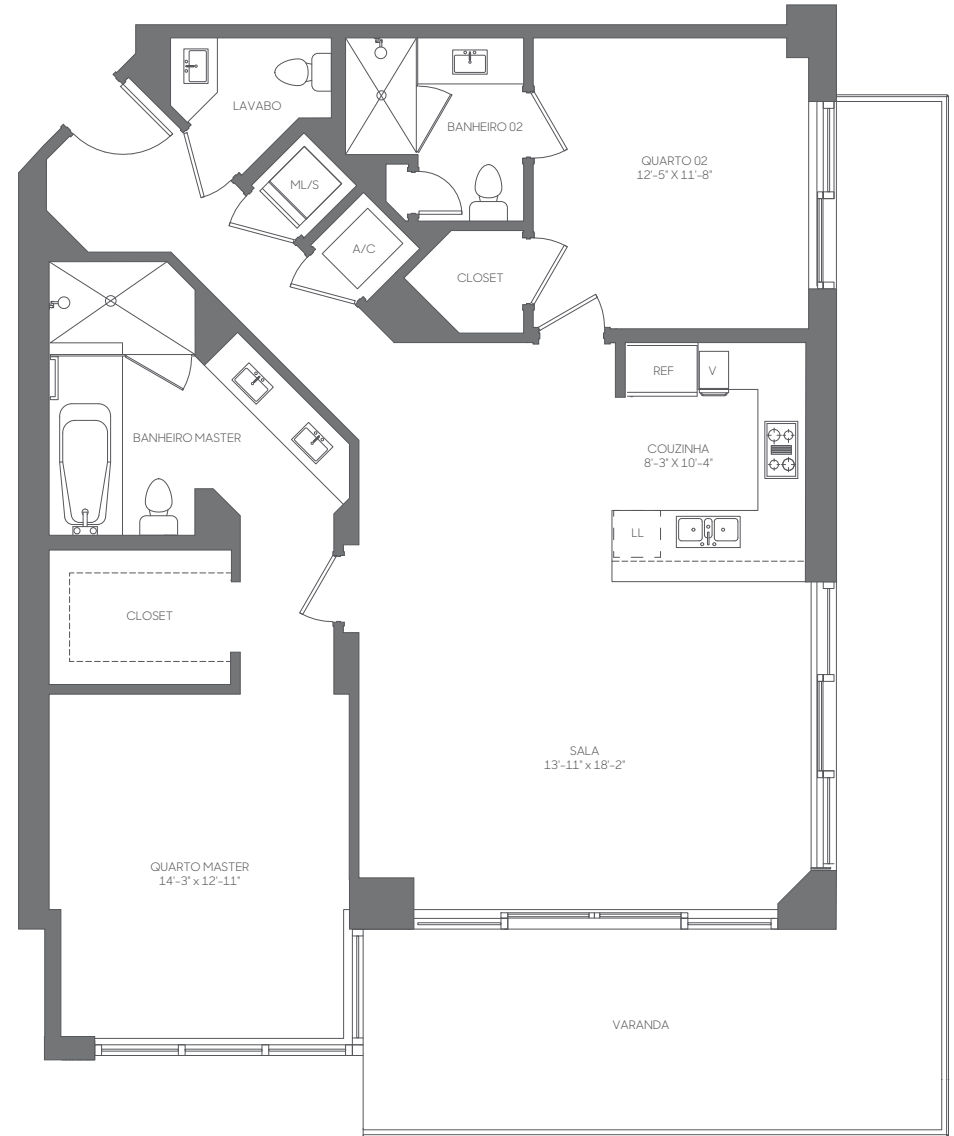
Stated dimensions are measured to the exterior boundaries of the exterior walls and the centerline of interior demising walls, including common elements such as structural walls and other interior structural components of the building, and in fact vary from the dimensions that would be determined by using the description and definition of the 'Unit' set forth in the Declaration (which generally only includes the interior airspace between the perimeter walls and excludes interior structural components). For your reference, the area of the Unit, determined in accordance with those defined unit boundaries, is 1,265 square feet. Note that measurements of rooms set forth on this floor plan are generally taken at the greatest points of each given room (as if the room were a perfect rectangle), without regard for any cutouts. Accordingly, the area of the actual room will typically be smaller than the product obtained by multiplying the stated length times width. All dimensions are approximate and may vary with actual construction, and all floor plans and development plans are subject to change. The size and configuration of balconies and terraces varies throughout the building. The balcony depicted above is among the larger balconies and is not reflective of the actual size or configuration of the balcony for each unit of this unit type. For the actual size and configuration of the balcony for your unit, see Exhibit '2' to the Declaration of Condominium. See legal disclaimer on back cover.



02
LINHA

2 QUARTOS | 2.5 BANHEIROS
ANDARES: 12, 14-36

RESIDÊNCIA (12, 14-20)	1,401 sq. ft.	130 sq. mt.
RESIDÊNCIA (21-32)	1,391 sq. ft.	129 sq. mt.
RESIDÊNCIA (33-36)	1,386 sq. ft.	128 sq. mt.
VARANDA	280-411 sq. ft.	26-38 sq. mt.
TOTAL	1,665-1,802 sq. ft.	154-167 sq. mt.



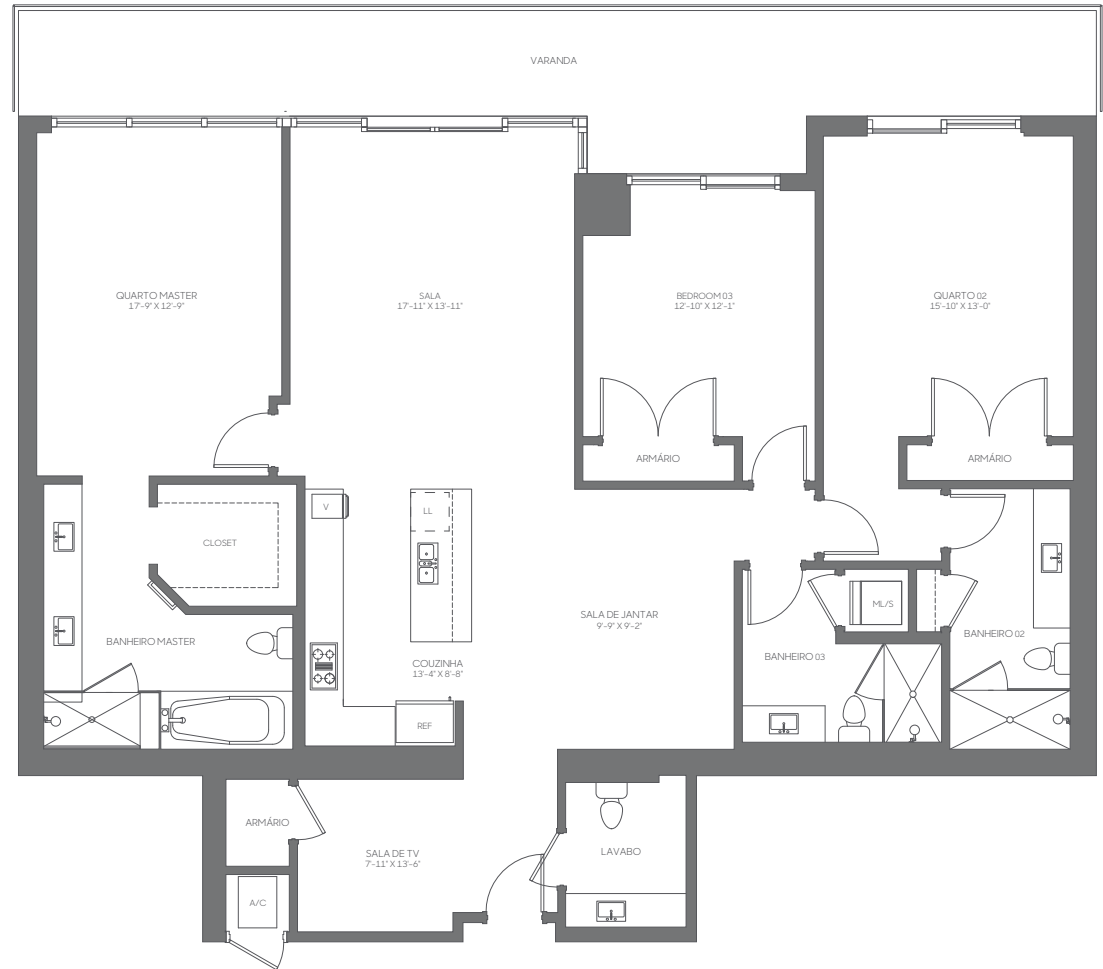
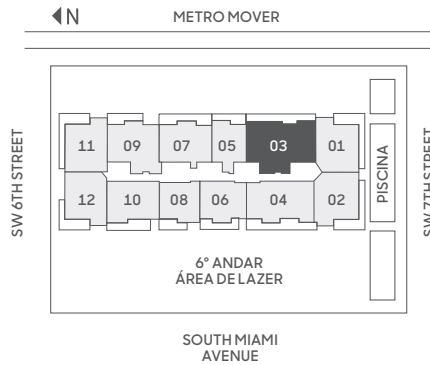
Stated dimensions are measured to the exterior boundaries of the exterior walls and the centerline of interior demising walls, including common elements such as structural walls and other interior structural components of the building, and in fact vary from the dimensions that would be determined by using the description and definition of the "Unit" set forth in the Declaration (which generally only includes the interior airspace between the perimeter walls and excludes interior structural components). For your reference, the area of the Unit, determined in accordance with those defined unit boundaries, is 1,265 square feet. Note that measurements of rooms set forth on this floor plan are generally taken at the greatest points of each given room (as if the room were a perfect rectangle), without regard for any cutouts. Accordingly, the area of the actual room will typically be smaller than the product obtained by multiplying the stated length times width. All dimensions are approximate and may vary with actual construction, and all floor plans and development plans are subject to change. The size and configuration of balconies and terraces varies throughout the building. The balcony depicted above is among the larger balconies and is not reflective of the actual size or configuration of the balcony for each unit of this unit type. For the actual size and configuration of the balcony for your unit, see Exhibit "2" to the Declaration of Condominium. See legal disclaimer on back cover.



03
LINHA

3 QUARTOS | 3.5 BANHEIROS | SALA DE ESTAR
ANDARES: 10, 12, 14-41

RESIDÊNCIA (10, 12, 14-20)	2,057 sq. ft.	191 sq. mt.
RESIDÊNCIA (21-32)	2,066 sq. ft.	192 sq. mt.
RESIDÊNCIA (33-41)	2,083 sq. ft.	194 sq. mt.
VARANDA	182-342 sq. ft.	17-32 sq. mt.
TOTAL	2,248-2,401 sq. ft.	209-223 sq. mt.



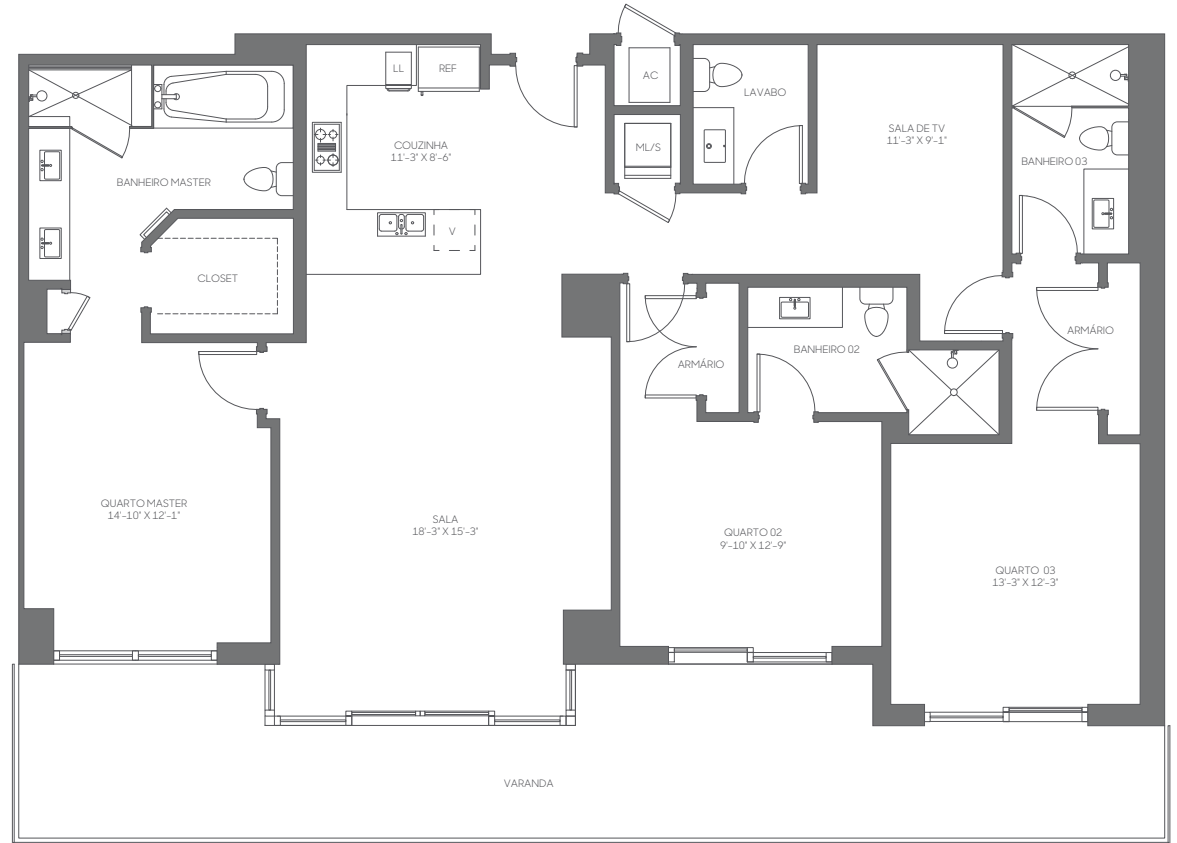
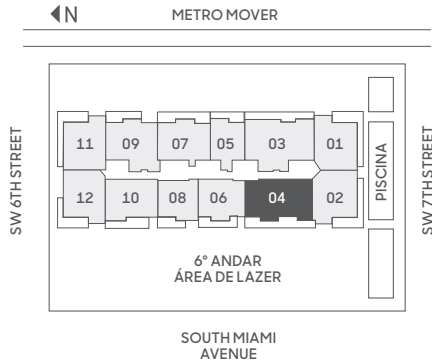
Stated dimensions are measured to the exterior boundaries of the exterior walls and the centerline of interior demising walls, including common elements such as structural walls and other interior structural components of the building, and in fact vary from the dimensions that would be determined by using the description and definition of the "Unit" set forth in the Declaration (which generally only includes the interior airspace between the perimeter walls and excludes interior structural components). For your reference, the area of the Unit, determined in accordance with those defined unit boundaries, is 1,856 square feet (levels 10, 12, 14-20), 1,891 square feet (levels 21-32), and 1,918 square feet (levels 33-41). Note that measurements of rooms set forth on this floor plan are generally taken at the greatest points of each given room (as if the room were a perfect rectangle), without regard for any cutouts. Accordingly, the area of the actual room will typically be smaller than the product obtained by multiplying the stated length times width. All dimensions are approximate and may vary with actual construction, and all floor plans and development plans are subject to change. The size and configuration of balconies and terraces varies throughout the building. The balcony depicted above is among the larger balconies and is not reflective of the actual size or configuration of the balcony for each unit of this unit type. For the actual size and configuration of the balcony for your unit, see Exhibit "2" to the Declaration of Condominium. See legal disclaimer on back cover.



04 LINHA

3 QUARTOS | 3.5 BANHEIROS | SALA DE ESTAR ANDARES: 10, 12, 14-41

RESIDÊNCIA (10, 12, 14-20)	1,782 sq. ft.	166 sq. mt.
RESIDÊNCIA (21-32)	1,793 sq. ft.	167 sq. mt.
RESIDÊNCIA (33-41)	1,799 sq. ft.	167 sq. mt.
VARANDA	207-387 sq. ft.	19-36 sq. mt.
TOTAL	2,000-2,180 sq. ft.	185-202 sq. mt.



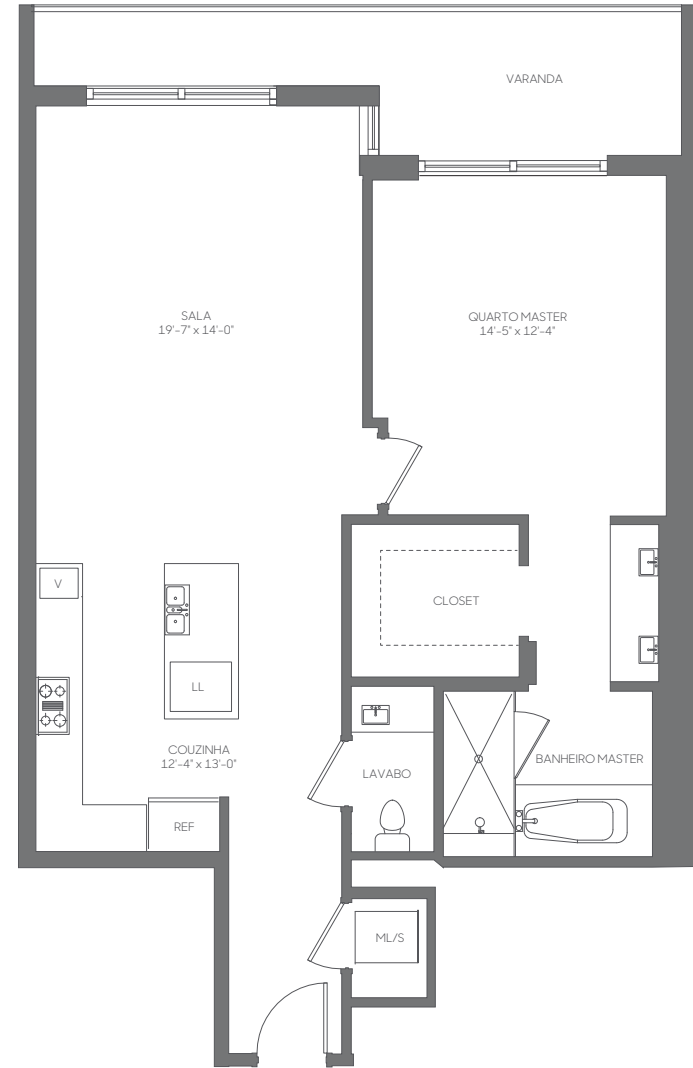
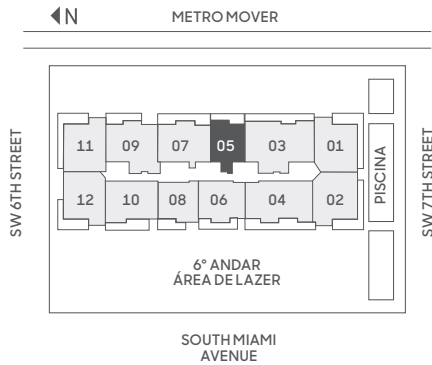
Stated dimensions are measured to the exterior boundaries of the exterior walls and the centerline of interior demising walls, including common elements such as structural walls and other interior structural components of the building, and in fact vary from the dimensions that would be determined by using the description and definition of the "Unit" set forth in the Declaration (which generally only includes the interior airspace between the perimeter walls and excludes interior structural components). For your reference, the area of the Unit, determined in accordance with those defined unit boundaries, is 1,641 square feet (levels 10, 12, 14-20), 1,660 square feet (levels 21-32), and 1,677 square feet (levels 33-41). Note that measurements of rooms set forth on this floor plan are generally taken at the greatest points of each given room (as if the room were a perfect rectangle), without regard for any cutouts. Accordingly, the area of the actual room will typically be smaller than the product obtained by multiplying the stated length times width. All dimensions are approximate and may vary with actual construction, and all floor plans and development plans are subject to change. The size and configuration of balconies and terraces varies throughout the building. The balcony depicted above is among the larger balconies and is not reflective of the actual size or configuration of the balcony for each unit of this unit type. For the actual size and configuration of the balcony for your unit, see Exhibit "2" to the Declaration of Condominium. See legal disclaimer on back cover.



05
LINHA

1 QUARTO | 1.5 BANHEIROS
ANDARES: 9-12, 14-41

RESIDÊNCIA	965 sq. ft.	90 sq. mt.
VARANDA	72-189 sq. ft.	7-18 sq. mt.
TOTAL	1,038-1,154 sq. ft.	96-107 sq. mt.



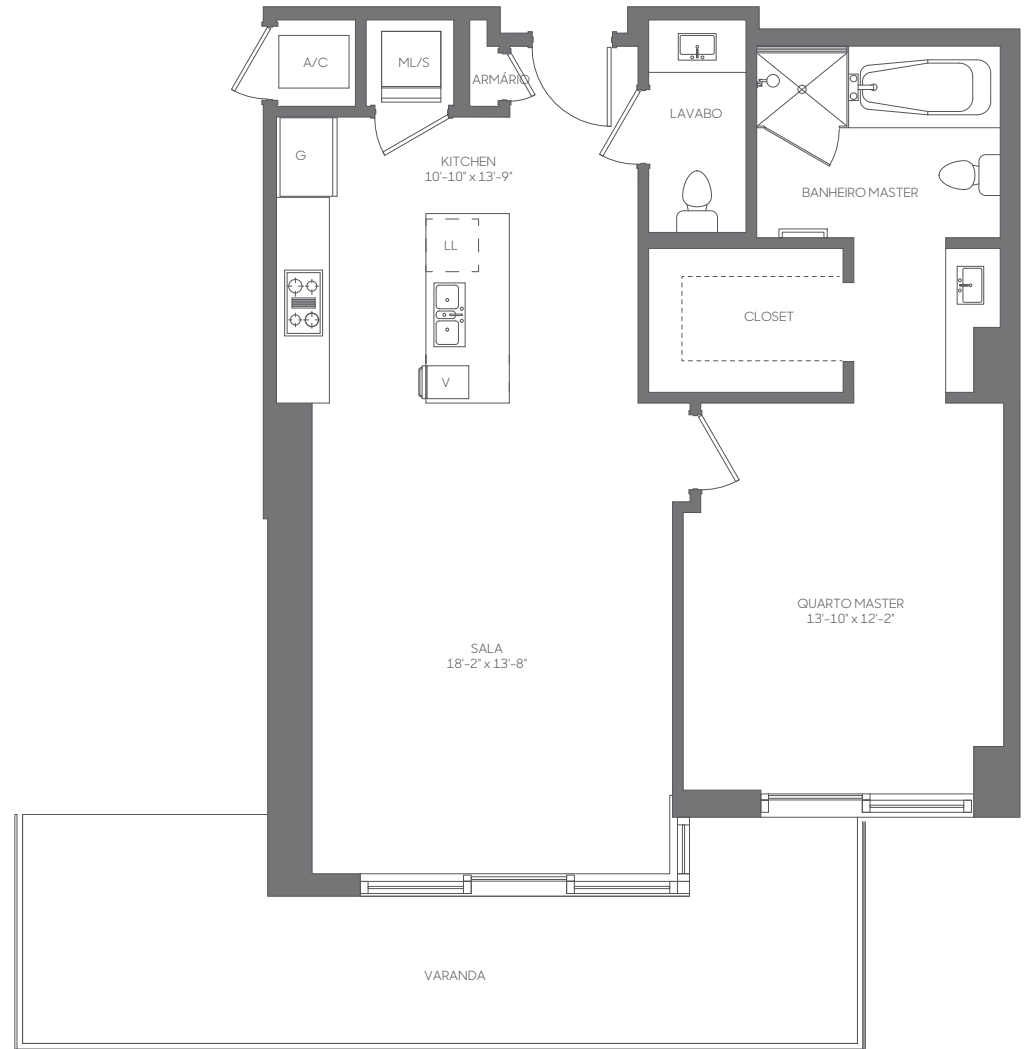
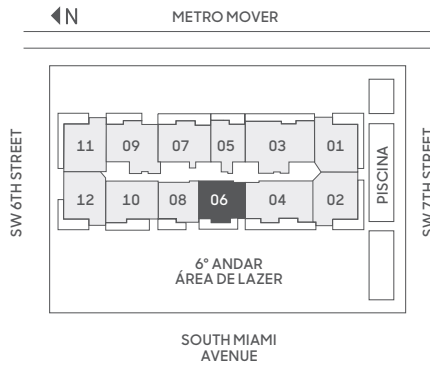
Stated dimensions are measured to the exterior boundaries of the exterior walls and the centerline of interior demising walls, including common elements such as structural walls and other interior structural components of the building, and in fact vary from the dimensions that would be determined by using the description and definition of the "Unit" set forth in the Declaration (which generally only includes the interior airspace between the perimeter walls and excludes interior structural components). For your reference, the area of the Unit, determined in accordance with those defined unit boundaries, is 878 square feet. Note that measurements of rooms set forth on this floor plan are generally taken at the greatest points of each given room (as if the room were a perfect rectangle), without regard for any cutouts. Accordingly, the area of the actual room will typically be smaller than the product obtained by multiplying the stated length times width. All dimensions are approximate and may vary with actual construction, and all floor plans and development plans are subject to change. The size and configuration of balconies and terraces varies throughout the building. The balcony depicted above is among the larger balconies and is not reflective of the actual size or configuration of the balcony for each unit of this unit type. For the actual size and configuration of the balcony for your unit, see Exhibit "2" to the Declaration of Condominium. See legal disclaimer on back cover.



06
LINHA

1 QUARTO | 1.5 BANHEIROS
FLOORS: 8-12, 14-41

RESIDÊNCIA	871 sq. ft.	81 sq. mt.
VARANDA	137-267 sq. ft.	13-25 sq. mt.
TOTAL	1,008-1,138 sq. ft.	93-105 sq. mt.



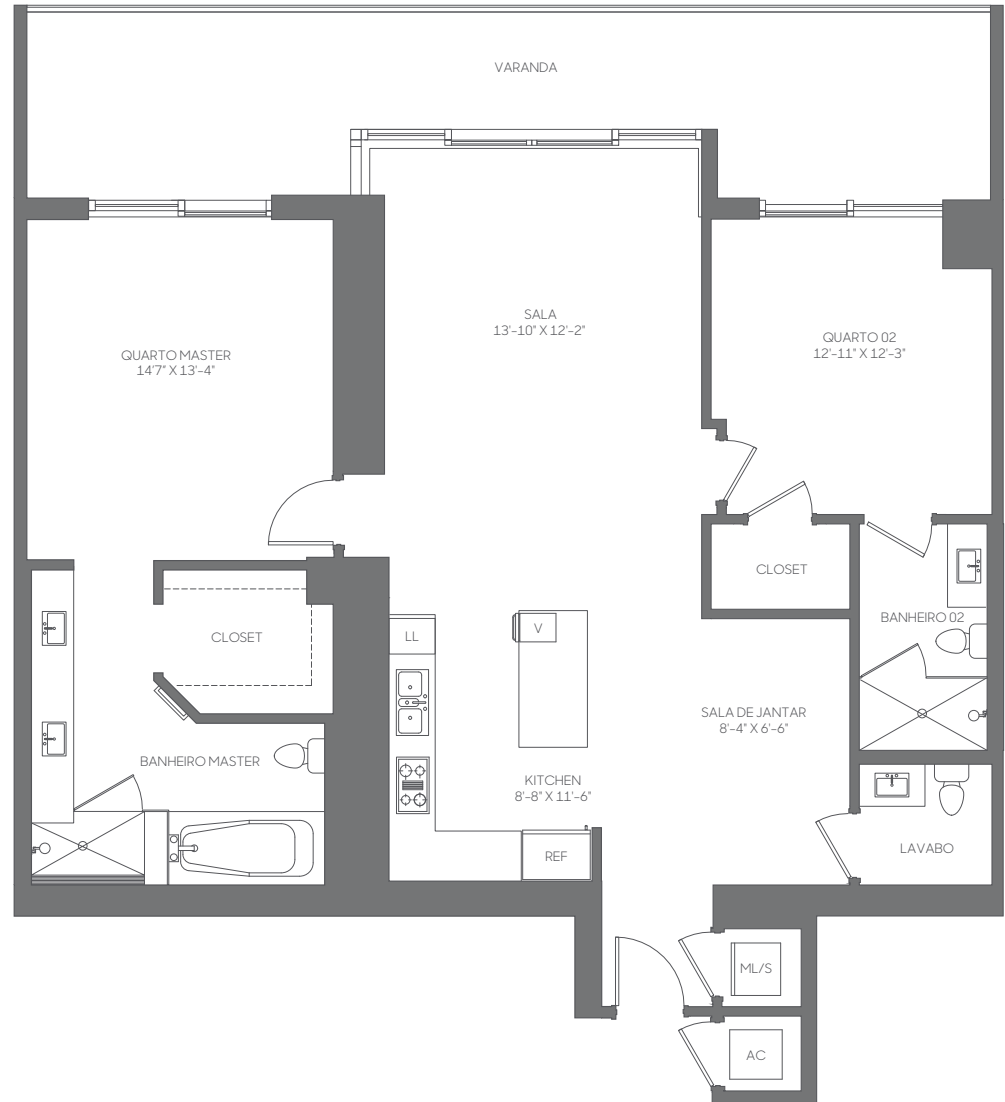
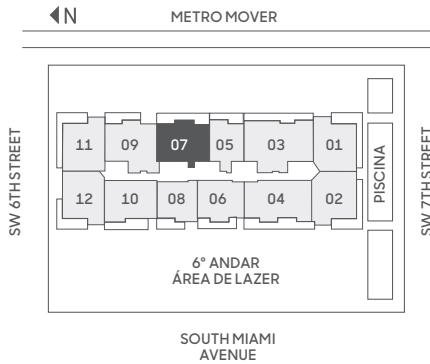
Stated dimensions are measured to the exterior boundaries of the exterior walls and the centerline of interior demising walls, including common elements such as structural walls and other interior structural components of the building, and in fact vary from the dimensions that would be determined by using the description and definition of the "Unit" set forth in the Declaration (which generally only includes the interior airspace between the perimeter walls and excludes interior structural components). For your reference, the area of the Unit, determined in accordance with those defined unit boundaries, is 810 square feet (levels 8-12, 14-32) and 812 square feet (levels 33-41). Note that measurements of rooms set forth on this floor plan are generally taken at the greatest points of each given room (as if the room were a perfect rectangle), without regard for any cutouts. Accordingly, the area of the actual room will typically be smaller than the product obtained by multiplying the stated length times width. All dimensions are approximate and may vary with actual construction, and all floor plans and development plans are subject to change. The size and configuration of balconies and terraces varies throughout the building. The balcony depicted above is among the larger balconies and is not reflective of the actual size or configuration of the balcony for each unit of this unit type. For the actual size and configuration of the balcony for your unit, see Exhibit "2" to the Declaration of Condominium. See legal disclaimer on back cover.



07
LINHA

2 QUARTO | 2.5 BANHEIROS
ANDARES: 8-12, 14-41

RESIDÊNCIA	1,392 sq. ft.	129 sq. mt.
VARANDA	150-306 sq. ft.	14-28 sq. mt.
TOTAL	1,542-1,698 sq. ft.	142-157 sq. mt.



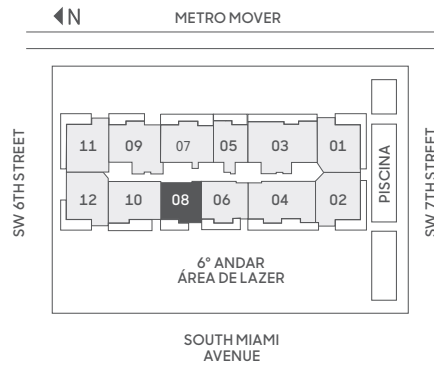
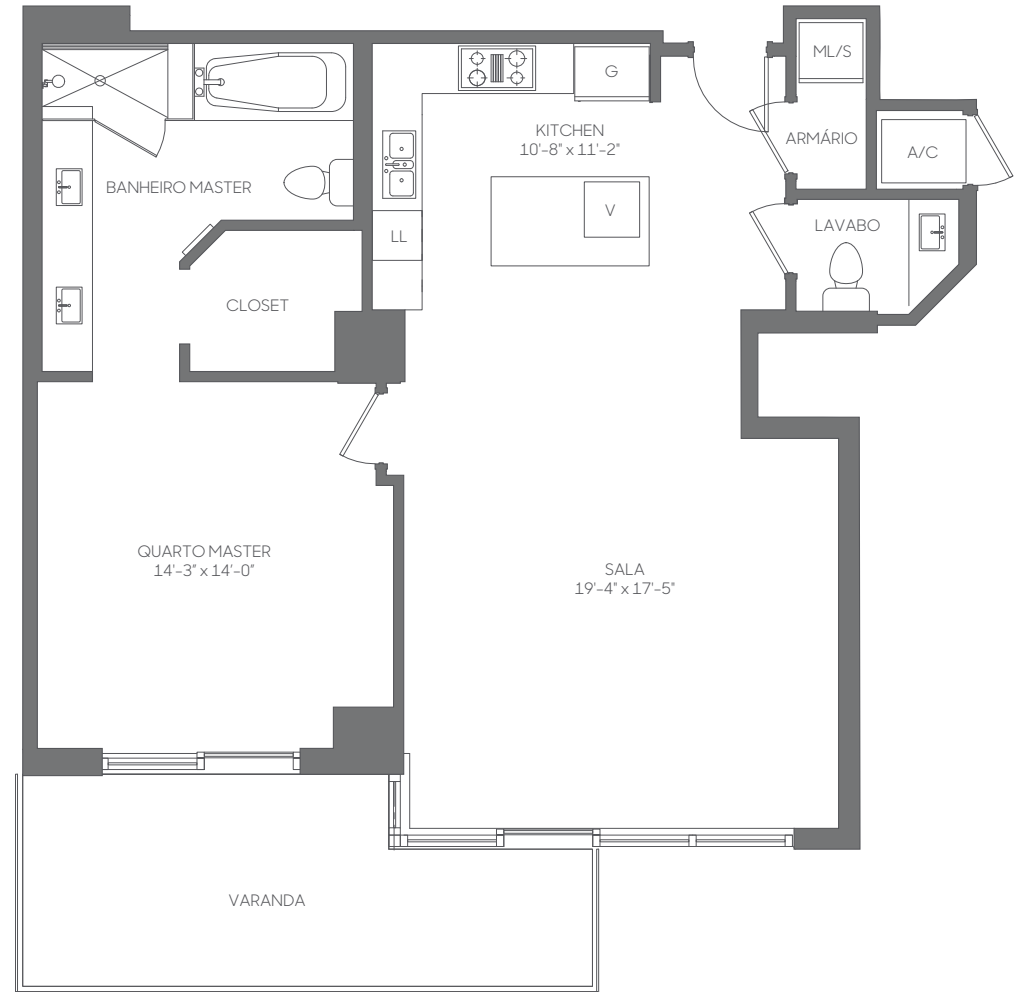
Stated dimensions are measured to the exterior boundaries of the exterior walls and the centerline of interior demising walls, including common elements such as structural walls and other interior structural components of the building, and in fact vary from the dimensions that would be determined by using the description and definition of the "Unit" set forth in the Declaration (which generally only includes the interior airspace between the perimeter walls and excludes interior structural components). For your reference, the area of the Unit, determined in accordance with those defined unit boundaries, is 1,242 square feet (levels 8-12, 14-20), 1,244 square feet (levels 21-32), and 1,247 square feet (levels 33-41). Note that measurements of rooms set forth on this floor plan are generally taken at the greatest points of each given room (as if the room were a perfect rectangle), without regard for any cutouts. Accordingly, the area of the actual room will typically be smaller than the product obtained by multiplying the stated length times width. All dimensions are approximate and may vary with actual construction, and all floor plans and development plans are subject to change. The size and configuration of balconies and terraces varies throughout the building. The balcony depicted above is among the larger balconies and is not reflective of the actual size or configuration of the balcony for each unit of this unit type. For the actual size and configuration of the balcony for your unit, see Exhibit "2" to the Declaration of Condominium. See legal disclaimer on back cover.



08
LINHA

1 QUARTO | 1.5 BANHEIROS
ANDARES: 8-12, 14-41

RESIDÊNCIA	1,040 sq. ft.	97 sq. mt.
VARANDA	105-219 sq. ft.	10-20 sq. mt.
TOTAL	1,145-1,259 sq. ft.	106-117 sq. mt.



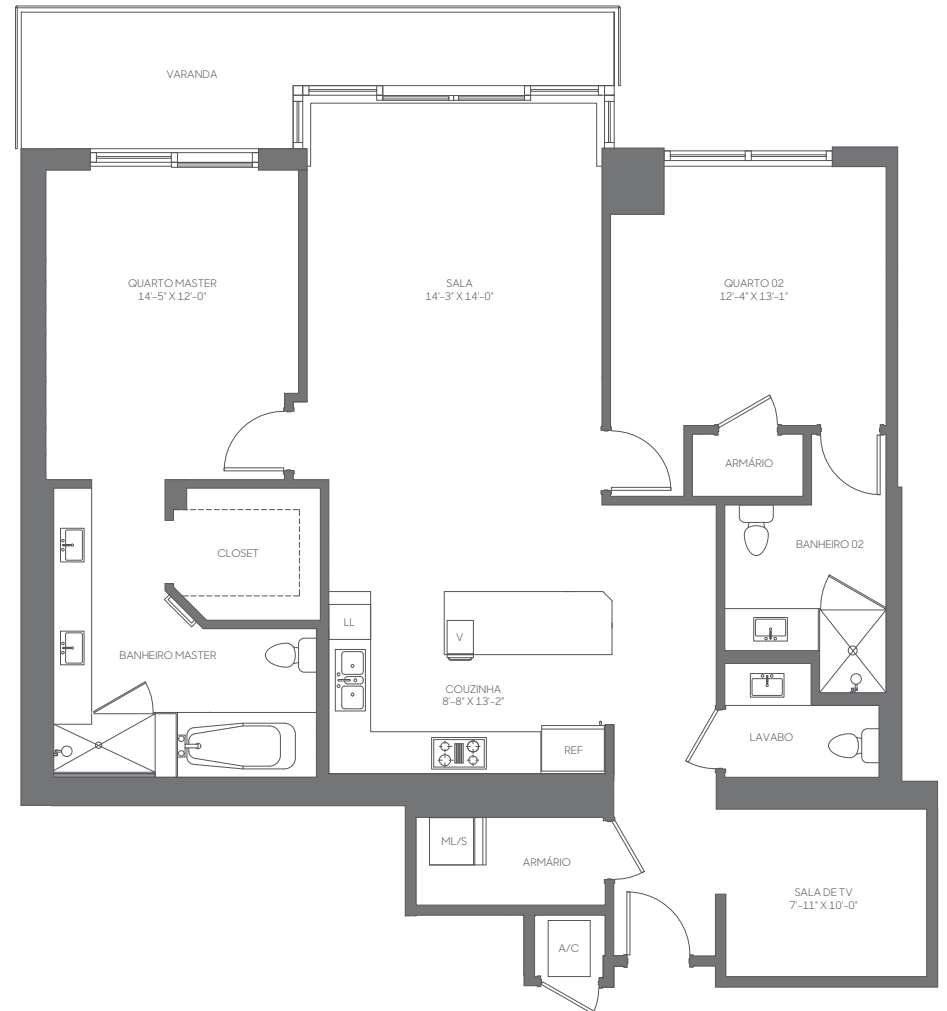
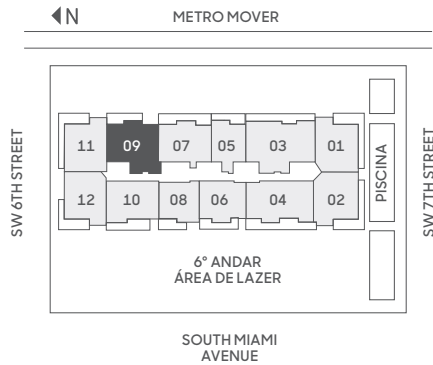
Stated dimensions are measured to the exterior boundaries of the exterior walls and the centerline of interior demising walls, including common elements such as structural walls and other interior structural components of the building, and in fact vary from the dimensions that would be determined by using the description and definition of the 'Unit' set forth in the Declaration (which generally only includes the interior airspace between the perimeter walls and excludes interior structural components). For your reference, the area of the Unit, determined in accordance with those defined unit boundaries, is 975 square feet (levels 8-12, 14-20), 976 square feet (levels 21-32) and 977 square feet (levels 33-41). Note that measurements of rooms set forth on this floor plan are generally taken at the greatest points of each given room (as if the room were a perfect rectangle), without regard for any cutouts. Accordingly, the area of the actual room will typically be smaller than the product obtained by multiplying the stated length times width. All dimensions are approximate and may vary with actual construction, and all floor plans and development plans are subject to change. The size and configuration of balconies and terraces varies throughout the building. The balcony depicted above is among the larger balconies and is not reflective of the actual size or configuration of the balcony for each unit of this unit type. For the actual size and configuration of the balcony for your unit, see Exhibit "2" to the Declaration of Condominium. See legal disclaimer on back cover.



09
LINHA

2 QUARTOS | 2.5 BANHEIROS | SALA DE ESTAR
ANDARES: 8-12, 14-41

RESIDÊNCIA (8-10)	1,500 sq. ft.	139 sq. mt.
RESIDÊNCIA (11-12, 14-20)	1,490 sq. ft.	138 sq. mt.
RESIDÊNCIA (21-32)	1,501 sq. ft.	139 sq. mt.
RESIDÊNCIA (33-41)	1,526 sq. ft.	142 sq. mt.
VARANDA	84-306 sq. ft.	8-28 sq. mt.
TOTAL	1,585-1,807 sq. ft.	147-167 sq. mt.



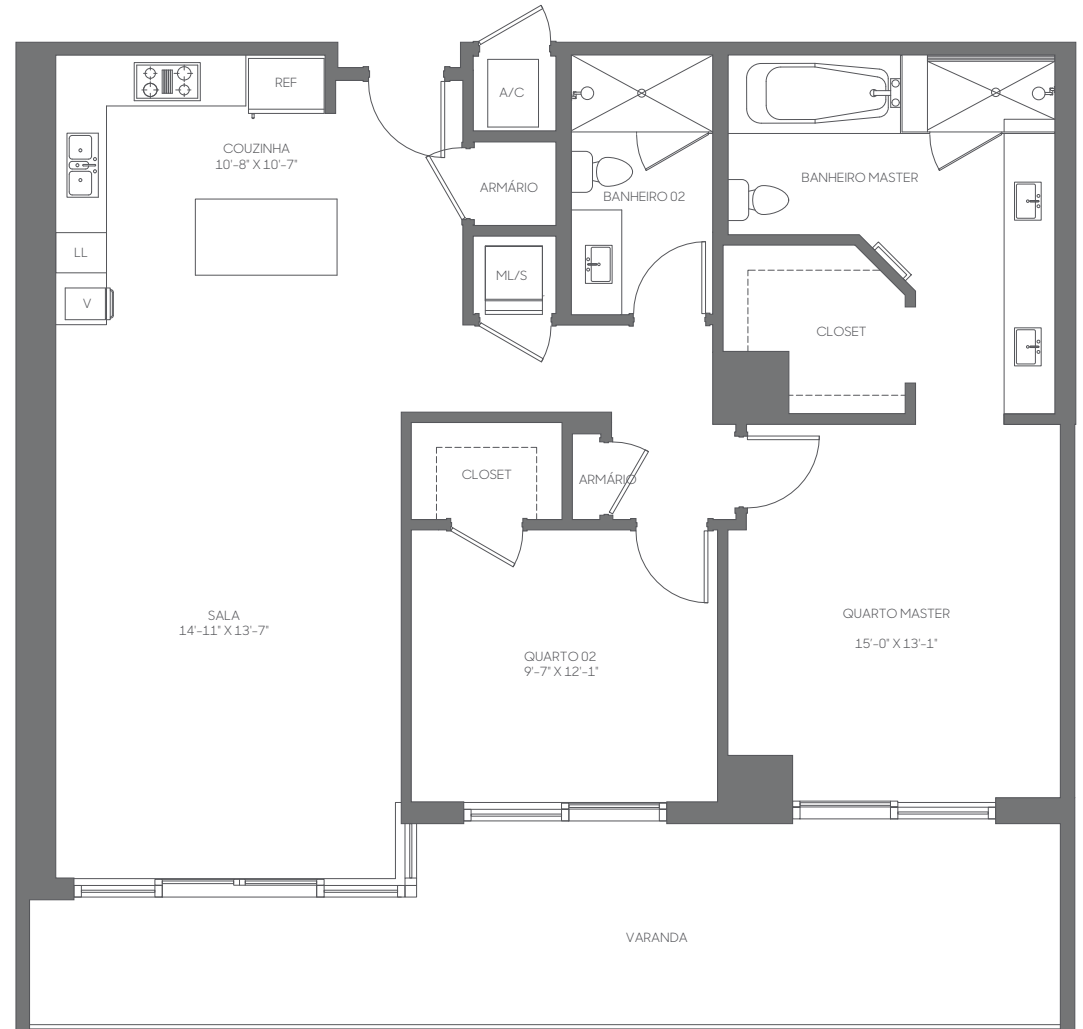
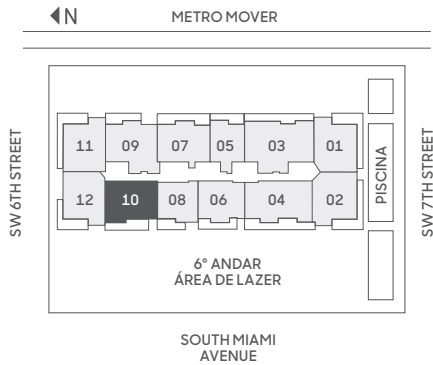
Stated dimensions are measured to the exterior boundaries of the exterior walls and the centerline of interior demising walls, including common elements such as structural walls and other interior structural components of the building, and in fact vary from the dimensions that would be determined by using the description and definition of the 'Unit' set forth in the Declaration (which generally only includes the interior airspace between the perimeter walls and excludes interior structural components). For your reference, the area of the Unit, determined in accordance with those defined unit boundaries, is 1,377 square feet (levels 8-10), 1,370 square feet (levels 11-12, 14-20), and 1,373 square feet (levels 21-32) and 1,395 (levels 33-41). Note that measurements of rooms set forth on this floor plan are generally taken at the greatest points of each given room (as if the room were a perfect rectangle), without regard for any cutouts. Accordingly, the area of the actual room will typically be smaller than the product obtained by multiplying the stated length times width. All dimensions are approximate and may vary with actual construction, and all floor plans and development plans are subject to change. The size and configuration of balconies and terraces varies throughout the building. The balcony depicted above is among the larger balconies and is not reflective of the actual size or configuration of the balcony for each unit of this unit type. For the actual size and configuration of the balcony for your unit, see Exhibit '2' to the Declaration of Condominium. See legal disclaimer on back cover.



10
LINHA

2 QUARTOS | 2 BANHEIROS
ANDARES: 8-12, 14-41

RESIDÊNCIA (8-12, 14-20)	1,307 sq. ft.	121 sq. mt.
RESIDÊNCIA (21-32)	1,317 sq. ft.	122 sq. mt.
RESIDÊNCIA (33-41)	1,323 sq. ft.	123 sq. mt.
VARANDA	159-303 sq. ft.	15-28 sq. mt.
TOTAL	1,476-1,610 sq. ft.	137-149 sq. mt.



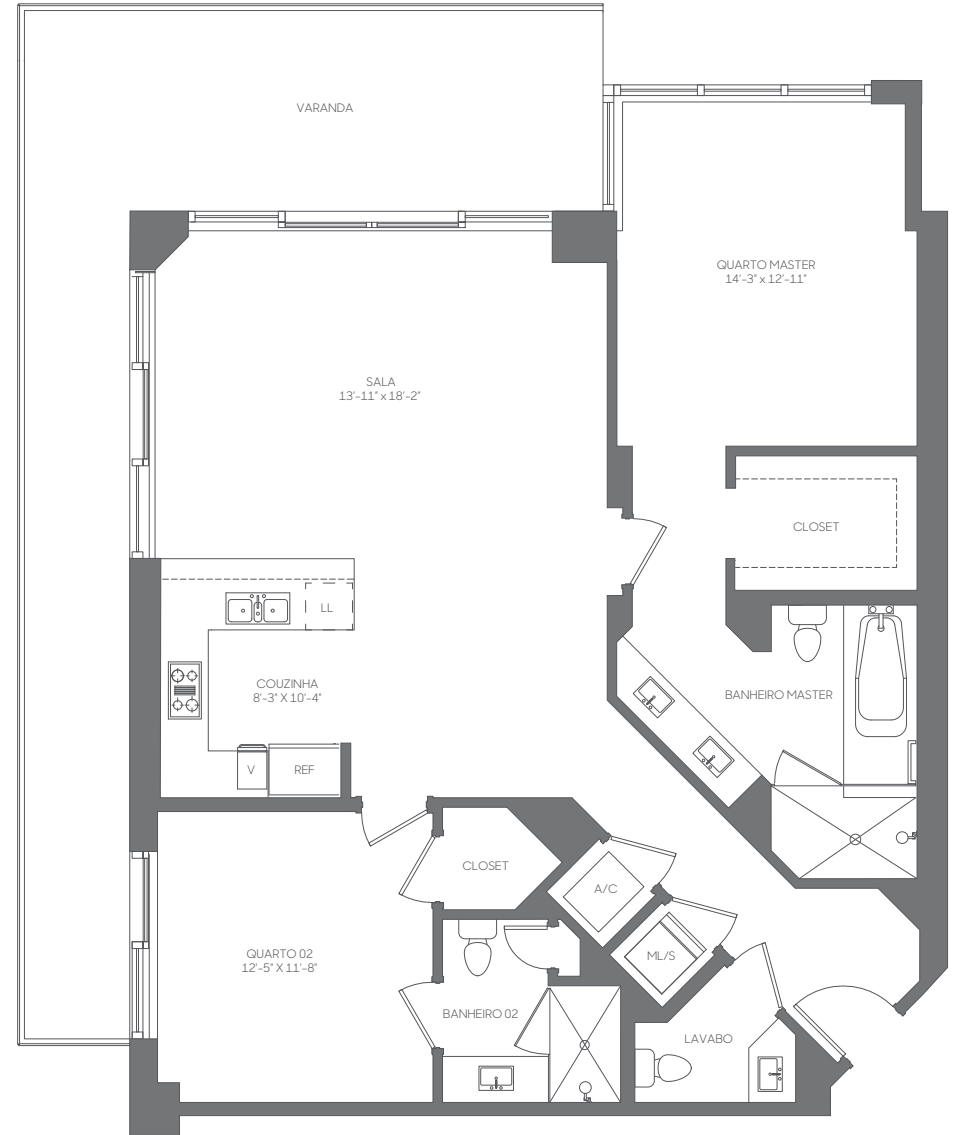
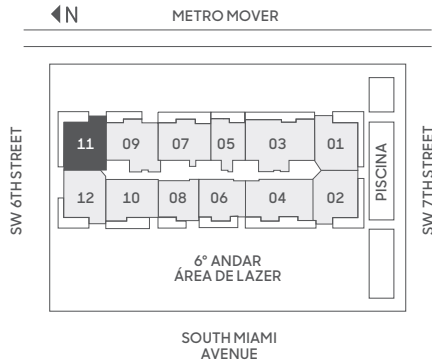
Stated dimensions are measured to the exterior boundaries of the exterior walls and the centerline of interior demising walls, including common elements such as structural walls and other interior structural components of the building, and in fact vary from the dimensions that would be determined by using the description and definition of the "Unit" set forth in the Declaration (which generally only includes the interior airspace between the perimeter walls and excludes interior structural components). For your reference, the area of the Unit, determined in accordance with those defined unit boundaries, is 1,193 square feet (levels 8-12, 14-20), 1,208 square feet (levels 21-32), and 1,219 square feet (levels 33-41). Note that measurements of rooms set forth on this floor plan are generally taken at the greatest points of each given room (as if the room were a perfect rectangle), without regard for any cutouts. Accordingly, the area of the actual room will typically be smaller than the product obtained by multiplying the stated length times width. All dimensions are approximate and may vary with actual construction, and all floor plans and development plans are subject to change. The size and configuration of balconies and terraces varies throughout the building. The balcony depicted above is among the larger balconies and is not reflective of the actual size or configuration of the balcony for each unit of this unit type. For the actual size and configuration of the balcony for your unit, see Exhibit "2" to the Declaration of Condominium. See legal disclaimer on back cover.



11
LINHA

2 QUARTOS | 2.5 BANHEIROS
ANDARES: 7-12, 14-36

RESIDÊNCIA (7-12, 14-20)	1,401 sq. ft.	130 sq. mt.
RESIDÊNCIA (21-32)	1,391 sq. ft.	129 sq. mt.
RESIDÊNCIA (33-36)	1,386 sq. ft.	128 sq. mt.
VARANDA	280-411 sq. ft.	26-38 sq. mt.
TOTAL	1,666-1,802 sq. ft.	154-167 sq. mt.



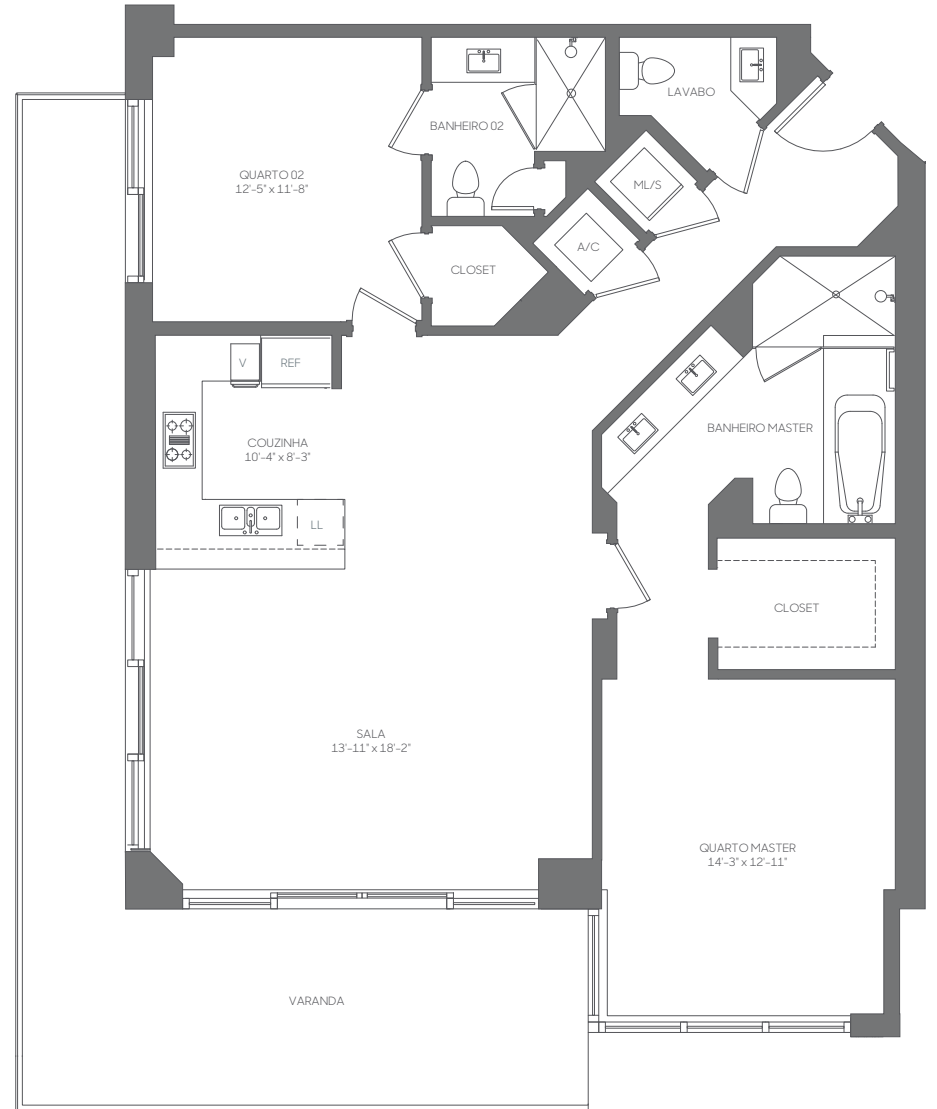
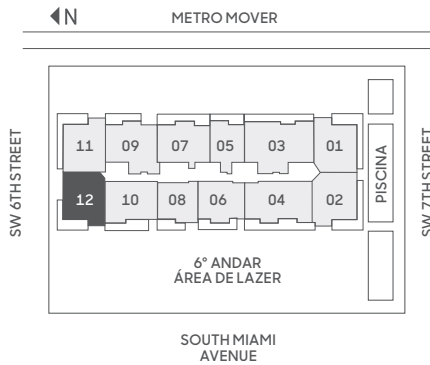
Stated dimensions are measured to the exterior boundaries of the exterior walls and the centerline of interior demising walls, including common elements such as structural walls and other interior structural components of the building, and in fact vary from the dimensions that would be determined by using the description and definition of the "Unit" set forth in the Declaration (which generally only includes the interior airspace between the perimeter walls and excludes interior structural components). For your reference, the area of the Unit, determined in accordance with those defined unit boundaries, is 1,265 square feet. Note that measurements of rooms set forth on this floor plan are generally taken at the greatest points of each given room (as if the room were a perfect rectangle), without regard for any cutouts. Accordingly, the area of the actual room will typically be smaller than the product obtained by multiplying the stated length times width. All dimensions are approximate and may vary with actual construction, and all floor plans and development plans are subject to change. The size and configuration of balconies and terraces varies throughout the building. The balcony depicted above is among the larger balconies and is not reflective of the actual size or configuration of the balcony for each unit of this unit type. For the actual size and configuration of the balcony for your unit, see Exhibit "2" to the Declaration of Condominium. See legal disclaimer on back cover.



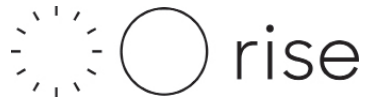
12
LINHA

2 QUARTOS | 2.5 BANHEIROS
ANDARES: 7-12, 14-36

RESIDÊNCIA (7-12, 14-20)	1,400 sq. ft.	130 sq. mt.
RESIDÊNCIA (21-32)	1,391 sq. ft.	129 sq. mt.
RESIDÊNCIA (33-36)	1,385 sq. ft.	128 sq. mt.
VARANDA	280-411 sq. ft.	26-38 sq. mt.
TOTAL	1,665-1,802 sq. ft.	154-167 sq. mt.



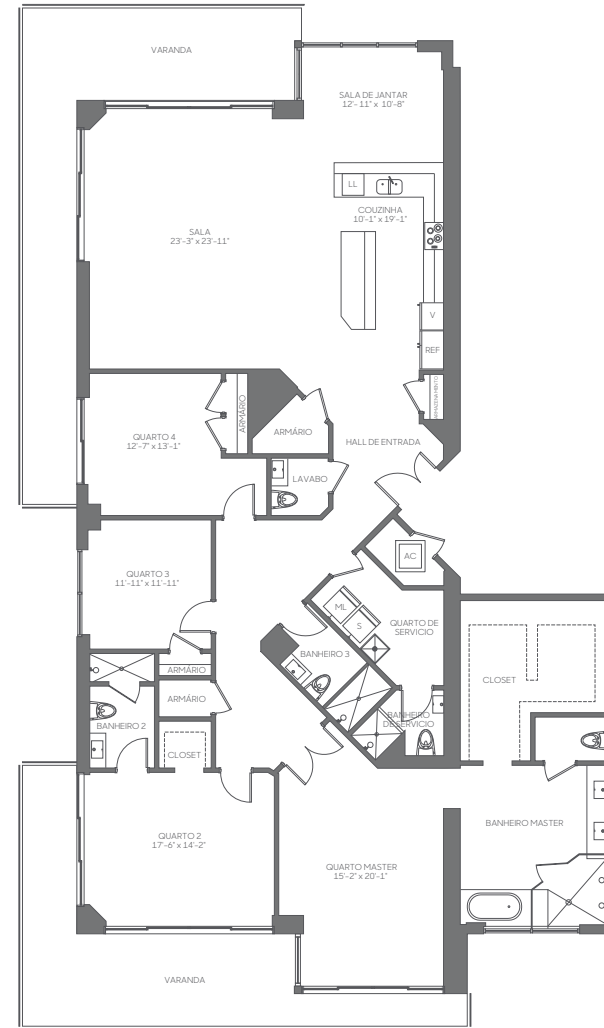
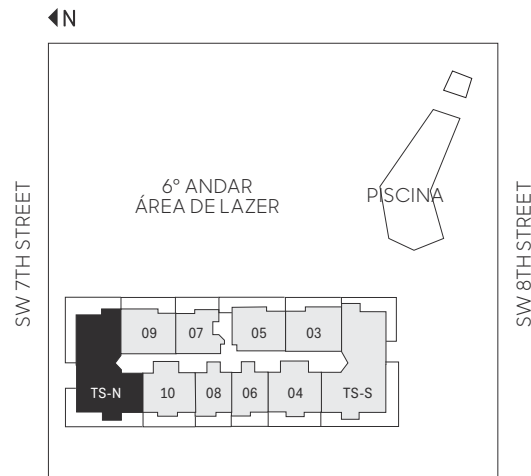
Stated dimensions are measured to the exterior boundaries of the exterior walls and the centerline of interior demising walls, including common elements such as structural walls and other interior structural components of the building, and in fact vary from the dimensions that would be determined by using the description and definition of the "Unit" set forth in the Declaration (which generally only includes the interior airspace between the perimeter walls and excludes interior structural components). For your reference, the area of the Unit, determined in accordance with those defined unit boundaries, is 1,265 square feet. Note that measurements of rooms set forth on this floor plan are generally taken at the greatest points of each given room (as if the room were a perfect rectangle), without regard for any cutouts. Accordingly, the area of the actual room will typically be smaller than the product obtained by multiplying the stated length times width. All dimensions are approximate and may vary with actual construction, and all floor plans and development plans are subject to change. The size and configuration of balconies and terraces varies throughout the building. The balcony depicted above is among the larger balconies and is not reflective of the actual size or configuration of the balcony for each unit of this unit type. For the actual size and configuration of the balcony for your unit, see Exhibit "2" to the Declaration of Condominium. See legal disclaimer on back cover.



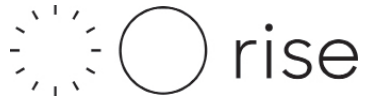
4 QUARTOS | 4,5 BANHEIROS DESPENSA

ANDARES: 37-41

RESIDÊNCIA	3,237 sq. ft.	301 sq. mt.
VARANDA	738 sq. ft.	69 sq. mt.
TOTAL	3,975 sq. ft.	370 sq. mt.



Stated dimensions are measured to the exterior boundaries of the exterior walls and the centerline of interior demising walls, including common elements such as structural walls and other interior structural components of the building, and in fact vary from the dimensions that would be determined by using the description and definition of the "Unit" set forth in the Declaration (which generally only includes the interior airspace between the perimeter walls and excludes interior structural components). For your reference, the area of the Unit, determined in accordance with those defined unit boundaries, is 2,991 square feet. Note that measurements of rooms set forth on this floor plan are generally taken at the greatest points of each given room (as if the room were a perfect rectangle), without regard for any cutouts. Accordingly, the area of the actual room will typically be smaller than the product obtained by multiplying the stated length times width. All dimensions are approximate and may vary with actual construction, and all floor plans and development plans are subject to change. The size and configuration of balconies and terraces varies throughout the building. The balcony depicted above is among the larger balconies and is not reflective of the actual size or configuration of the balcony for each unit of this unit type. For the actual size and configuration of the balcony for your unit, see Exhibit "2" to the Declaration of Condominium. See legal disclaimer on back cover.

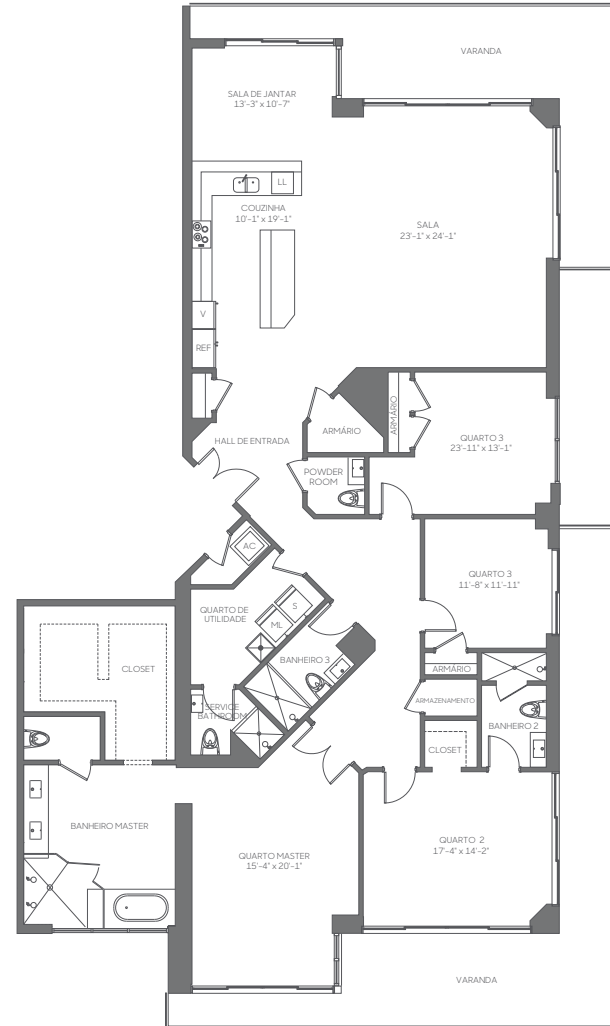
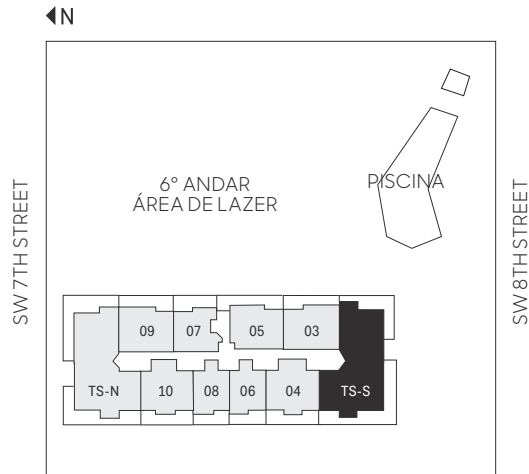


S
TORRE
SUITE

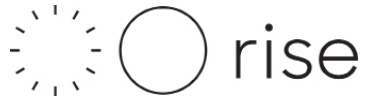
**4 QUARTOS | 4,5 BANHEIROS
DESPENSA**

ANDARES: 37-41

RESIDÊNCIA	3,244 sq. ft.	301 sq. mt.
VARANDA	738-777 sq. ft.	69-72 sq. mt.
TOTAL	3,982-4,021 sq. ft.	370-373 sq. mt.



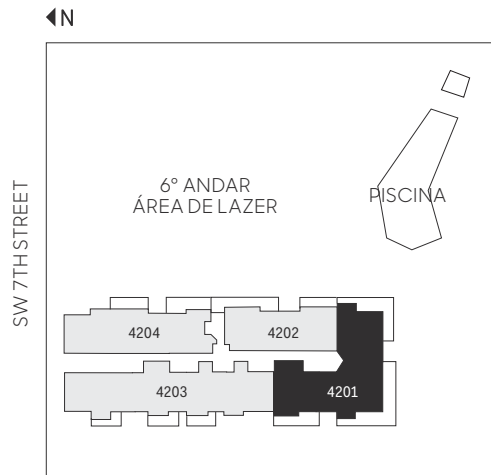
Stated dimensions are measured to the exterior boundaries of the exterior walls and the centerline of interior demising walls, including common elements such as structural walls and other interior structural components of the building, and in fact vary from the dimensions that would be determined by using the description and definition of the "Unit" set forth in the Declaration (which generally only includes the interior airspace between the perimeter walls and excludes interior structural components). For your reference, the area of the Unit, determined in accordance with those defined unit boundaries, is 2,997 square feet. Note that measurements of rooms set forth on this floor plan are generally taken at the greatest points of each given room (as if the room were a perfect rectangle), without regard for any cutouts. Accordingly, the area of the actual room will typically be smaller than the product obtained by multiplying the stated length times width. All dimensions are approximate and may vary with actual construction, and all floor plans and development plans are subject to change. The size and configuration of balconies and terraces varies throughout the building. The balcony depicted above is among the larger balconies and is not reflective of the actual size or configuration of the balcony for each unit of this unit type. For the actual size and configuration of the balcony for your unit, see Exhibit '2' to the Declaration of Condominium. See legal disclaimer on back cover.



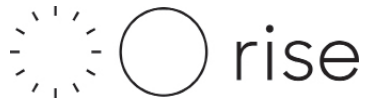
4201
PENTHOUSE

5 QUARTOS | 6.5 BANHEIROS
SALA DE JANTAR | DESPENSA
ANDARE: 42

RESIDÊNCIA	4,754 sq. ft.	442 sq. mt.
VARANDA	1,035 sq. ft.	96 sq. mt.
TOTAL	5,789 sq. ft.	538 sq. mt.



Stated dimensions are measured to the exterior boundaries of the exterior walls and the centerline of interior demising walls, including common elements such as structural walls and other interior structural components of the building, and in fact vary from the dimensions that would be determined by using the description and definition of the "Unit" set forth in the Declaration (which generally only includes the interior airspace between the perimeter walls and excludes interior structural components). For your reference, the area of the Unit, determined in accordance with those defined unit boundaries, is 4,431 square feet. Note that measurements of rooms set forth on this floor plan are generally taken at the greatest points of each given room (as if the room were a perfect rectangle), without regard for any cutouts. Accordingly, the area of the actual room will typically be smaller than the product obtained by multiplying the stated length times width. All dimensions are approximate and may vary with actual construction, and all floor plans and development plans are subject to change. The size and configuration of balconies and terraces varies throughout the building. The balcony depicted above is among the larger balconies and is not reflective of the actual size or configuration of the balcony for each unit of this unit type. For the actual size and configuration of the balcony for your unit, see Exhibit "2" to the Declaration of Condominium. See legal disclaimer on back cover.

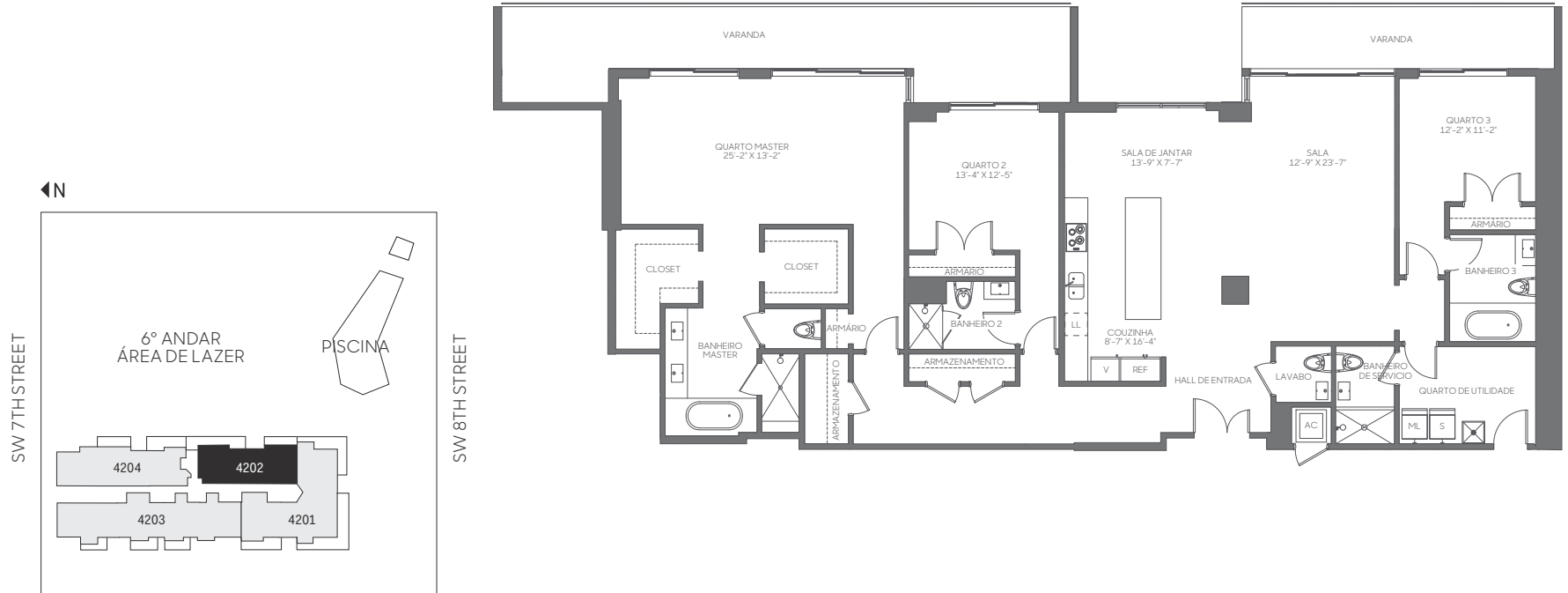


4202
PENTHOUSE

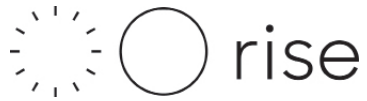
3 QUARTOS | 4.5 BANHEIROS DESPENSA

ANDARE: 42

RESIDÊNCIA	2,686 sq. ft.	250 sq. mt.
VARANDA	501 sq. ft.	47 sq. mt.
TOTAL	3,187 sq. ft.	297 sq. mt.



Stated dimensions are measured to the exterior boundaries of the exterior walls and the centerline of interior demising walls, including common elements such as structural walls and other interior structural components of the building, and in fact vary from the dimensions that would be determined by using the description and definition of the "Unit" set forth in the Declaration (which generally only includes the interior airspace between the perimeter walls and excludes interior structural components). For your reference, the area of the Unit, determined in accordance with those defined unit boundaries, is 2,522 square feet. Note that measurements of rooms set forth on this floor plan are generally taken at the greatest points of each given room (as if the room were a perfect rectangle), without regard for any cutouts. Accordingly, the area of the actual room will typically be smaller than the product obtained by multiplying the stated length times width. All dimensions are approximate and may vary with actual construction, and all floor plans and development plans are subject to change. The size and configuration of balconies and terraces varies throughout the building. The balcony depicted above is among the larger balconies and is not reflective of the actual size or configuration of the balcony for each unit of this unit type. For the actual size and configuration of the balcony for your unit, see Exhibit "2" to the Declaration of Condominium. See legal disclaimer on back cover.

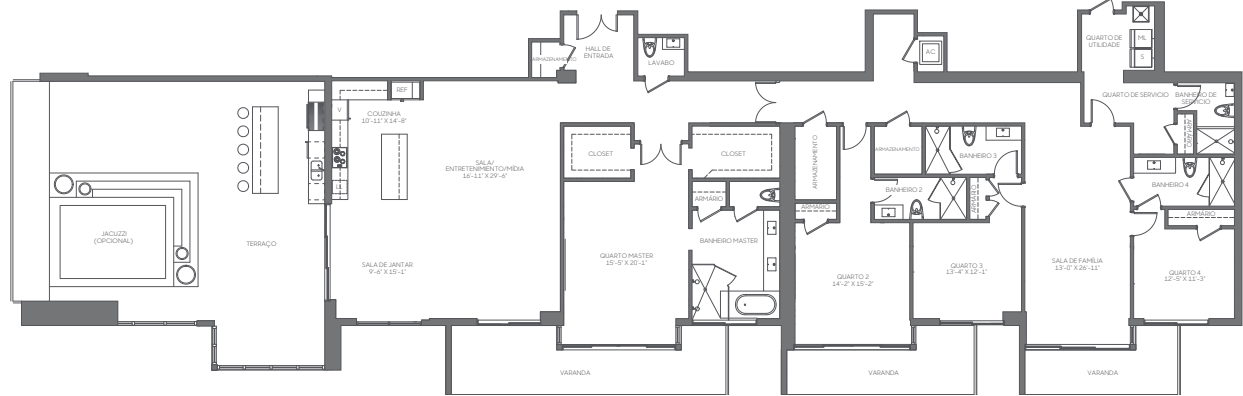
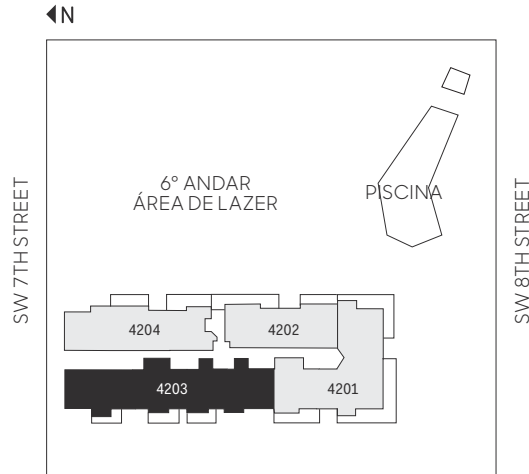


4203
PENTHOUSE

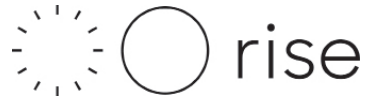
4 QUARTOS | 5.5 BANHEIROS
SALA DE FAMÍLIA | DESPENSA | TERRAÇO

ANDARE: 42

RESIDÊNCIA	3,904 sq. ft.	363 sq. mt.
VARANDA	509 sq. ft.	47 sq. mt.
TERRAÇO	1,174 sq. ft.	109 sq. mt.
TOTAL	5,587 sq. ft.	519 sq. mt.



Stated dimensions are measured to the exterior boundaries of the exterior walls and the centerline of interior demising walls, including common elements such as structural walls and other interior structural components of the building, and in fact vary from the dimensions that would be determined by using the description and definition of the "Unit" set forth in the Declaration (which generally only includes the interior airspace between the perimeter walls and excludes interior structural components). For your reference, the area of the Unit, determined in accordance with those defined unit boundaries, is 3,627 square feet. Note that measurements of rooms set forth on this floor plan are generally taken at the greatest points of each given room (as if the room were a perfect rectangle), without regard for any cutouts. Accordingly, the area of the actual room will typically be smaller than the product obtained by multiplying the stated length times width. All dimensions are approximate and may vary with actual construction, and all floor plans and development plans are subject to change. The size and configuration of balconies and terraces varies throughout the building. The balcony depicted above is among the larger balconies and is not reflective of the actual size or configuration of the balcony for each unit of this unit type. For the actual size and configuration of the balcony for your unit, see Exhibit "2" to the Declaration of Condominium. See legal disclaimer on back cover.

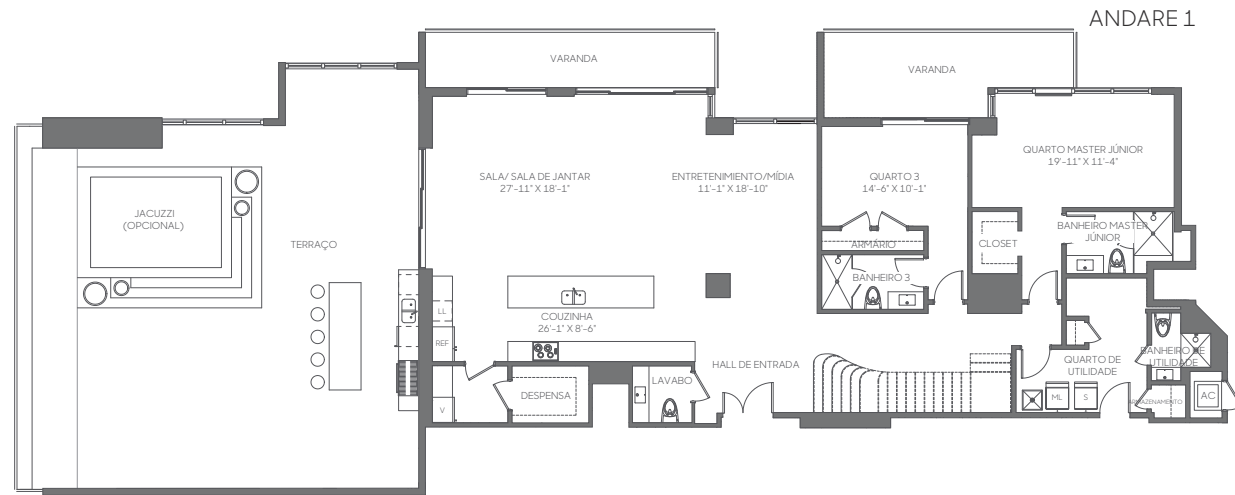
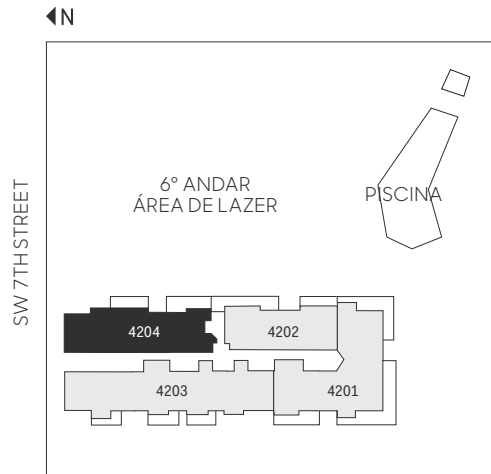
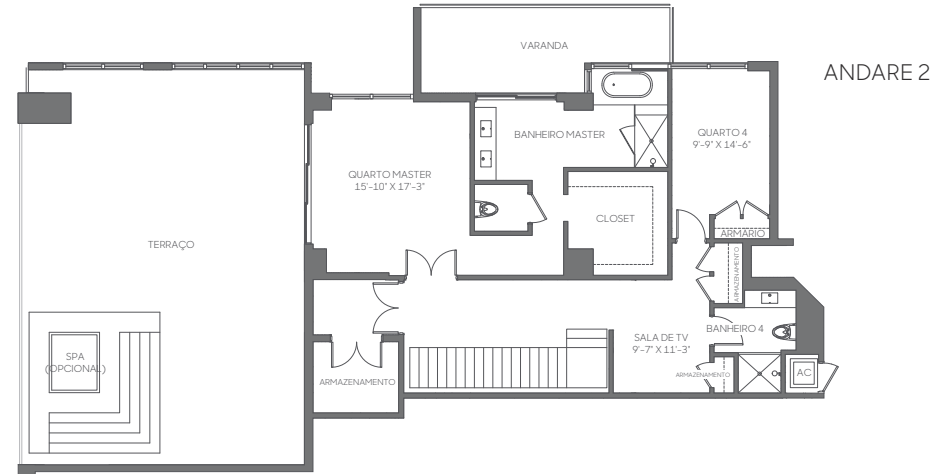


4204
PENTHOUSE

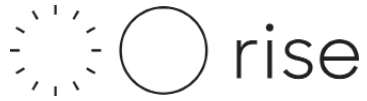
4 QUARTOS | 5.5 BANHEIROS
SALA DE ESTAR | DESPENSA | TERRAÇO

ANDARES: 42 & 43

RESIDÊNCIA	3,936 sq. ft.	366 sq. mt.
VARANDA	528 sq. ft.	49 sq. mt.
TERRAÇO	2,515 sq. ft.	234 sq. mt.
TOTAL	6,979 sq. ft.	649 sq. mt.



Stated dimensions are measured to the exterior boundaries of the exterior walls and the centerline of interior demising walls, including common elements such as structural walls and other interior structural components of the building, and in fact vary from the dimensions that would be determined by using the description and definition of the "Unit" set forth in the Declaration (which generally only includes the interior airspace between the perimeter walls and excludes interior structural components). For your reference, the area of the Unit, determined in accordance with those defined unit boundaries, is 3,605 square feet. Note that measurements of rooms set forth on this floor plan are generally taken at the greatest points of each given room (as if the room were a perfect rectangle), without regard for any cutouts. Accordingly, the area of the actual room will typically be smaller than the product obtained by multiplying the stated length times width. All dimensions are approximate and may vary with actual construction, and all floor plans and development plans are subject to change. The size and configuration of balconies and terraces varies throughout the building. The balcony depicted above is among the larger balconies and is not reflective of the actual size or configuration of the balcony for each unit of this unit type. For the actual size and configuration of the balcony for your unit, see Exhibit "2" to the Declaration of Condominium. See legal disclaimer on back cover.

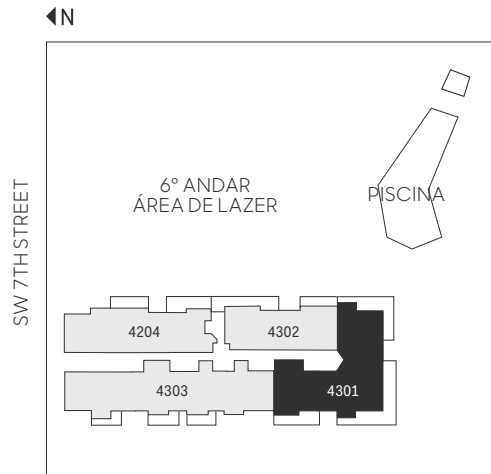


4301
PENTHOUSE

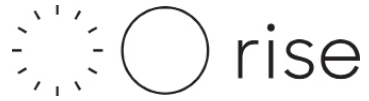
4 QUARTOS | 5.5 BANHEIROS
SALA DE FAMÍLIA | DESPENSA

ANDARE: 43

RESIDÊNCIA	4,335 sq. ft.	403 sq. mt.
VARANDA	1,035 sq. ft.	96 sq. mt.
TOTAL	5,370 sq. ft.	499 sq. mt.



Stated dimensions are measured to the exterior boundaries of the exterior walls and the centerline of interior demising walls, including common elements such as structural walls and other interior structural components of the building, and in fact vary from the dimensions that would be determined by using the description and definition of the "Unit" set forth in the Declaration (which generally only includes the interior airspace between the perimeter walls and excludes interior structural components). For your reference, the area of the Unit, determined in accordance with those defined unit boundaries, is 4,047 square feet. Note that measurements of rooms set forth on this floor plan are generally taken at the greatest points of each given room (as if the room were a perfect rectangle), without regard for any cutouts. Accordingly, the area of the actual room will typically be smaller than the product obtained by multiplying the stated length times width. All dimensions are approximate and may vary with actual construction, and all floor plans and development plans are subject to change. The size and configuration of balconies and terraces varies throughout the building. The balcony depicted above is among the larger balconies and is not reflective of the actual size or configuration of the balcony for each unit of this unit type. For the actual size and configuration of the balcony for your unit, see Exhibit "2" to the Declaration of Condominium. See legal disclaimer on back cover.

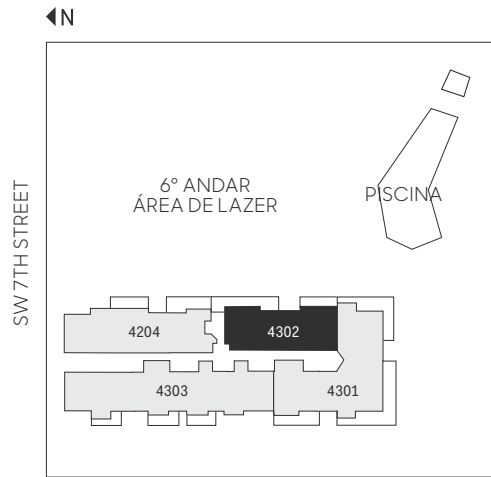
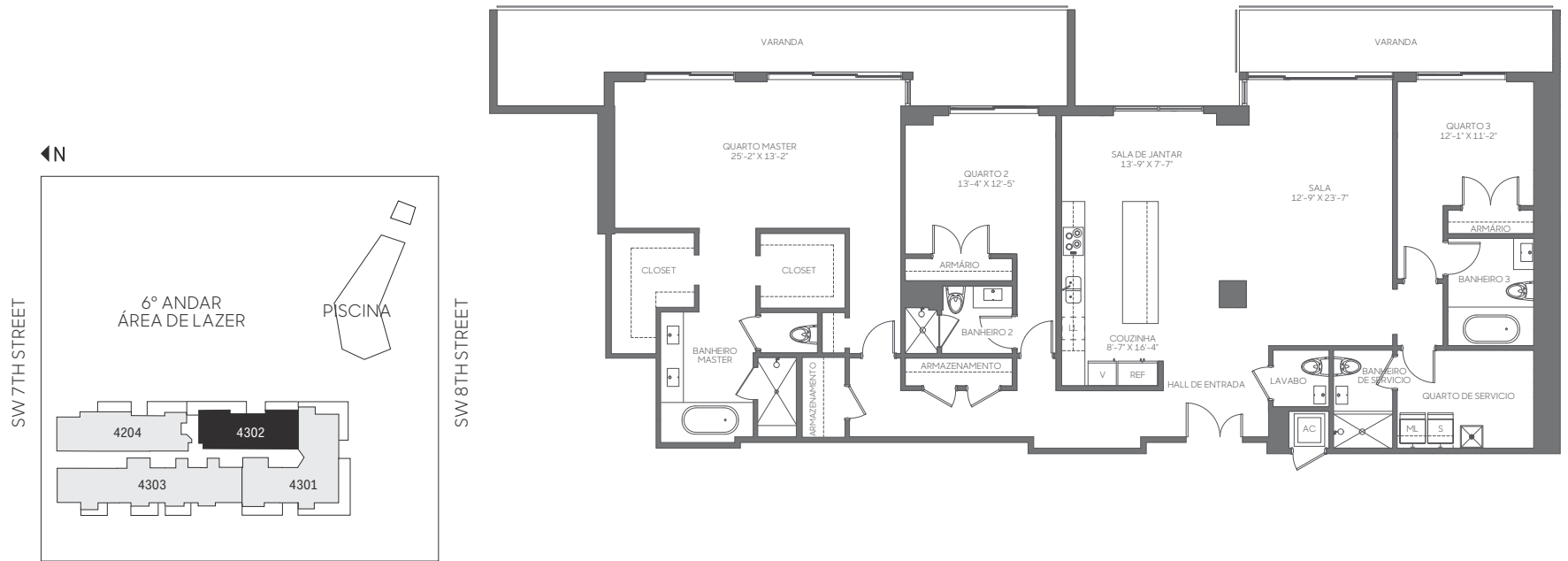


4302
PENTHOUSE

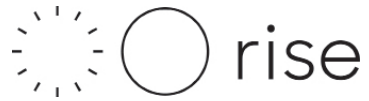
3 QUARTOS | 4.5 BANHEIROS
DESPENSA

ANDARE: 43

RESIDÊNCIA	2,686 sq. ft.	250 sq. mt.
VARANDA	501 sq. ft.	47 sq. mt.
TOTAL	3,187 sq. ft.	297 sq. mt.



Stated dimensions are measured to the exterior boundaries of the exterior walls and the centerline of interior demising walls, including common elements such as structural walls and other interior structural components of the building, and in fact vary from the dimensions that would be determined by using the description and definition of the "Unit" set forth in the Declaration (which generally only includes the interior airspace between the perimeter walls and excludes interior structural components). For your reference, the area of the Unit, determined in accordance with those defined unit boundaries, is 2,501 square feet. Note that measurements of rooms set forth on this floor plan are generally taken at the greatest points of each given room (as if the room were a perfect rectangle), without regard for any cutouts. Accordingly, the area of the actual room will typically be smaller than the product obtained by multiplying the stated length times width. All dimensions are approximate and may vary with actual construction, and all floor plans and development plans are subject to change. The size and configuration of balconies and terraces varies throughout the building. The balcony depicted above is among the larger balconies and is not reflective of the actual size or configuration of the balcony for each unit of this unit type. For the actual size and configuration of the balcony for your unit, see Exhibit "2" to the Declaration of Condominium. See legal disclaimer on back cover.

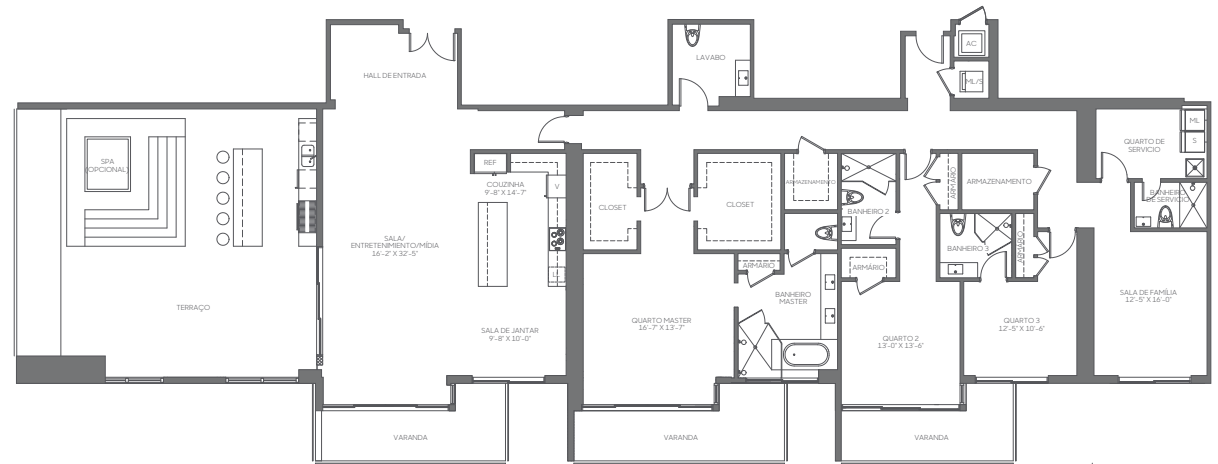
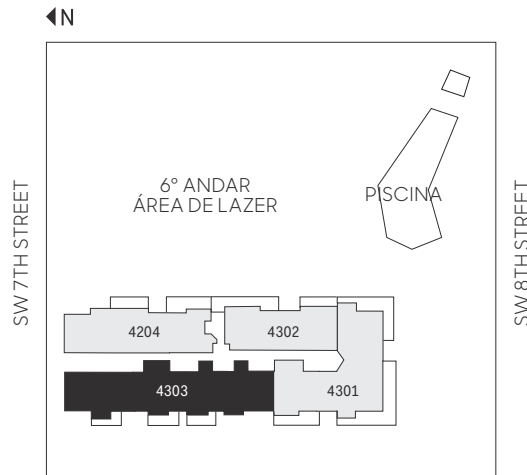


4303
PENTHOUSE

3 QUARTOS | 4.5 BANHEIROS
SALA DE JANTAR | DESPENSA | TERRAÇO

ANDARE: 43

RESIDÊNCIA	3,430 sq. ft.	319 sq. mt.
VARANDA	398 sq. ft.	37 sq. mt.
TERRAÇO	943 sq. ft.	88 sq. mt.
TOTAL	4,771 sq. ft.	444 sq. mt.



Stated dimensions are measured to the exterior boundaries of the exterior walls and the centerline of interior demising walls, including common elements such as structural walls and other interior structural components of the building, and in fact vary from the dimensions that would be determined by using the description and definition of the "Unit" set forth in the Declaration (which generally only includes the interior airspace between the perimeter walls and excludes interior structural components). For your reference, the area of the Unit, determined in accordance with those defined unit boundaries, is 3,128 square feet. Note that measurements of rooms set forth on this floor plan are generally taken at the greatest points of each given room (as if the room were a perfect rectangle), without regard for any cutouts. Accordingly, the area of the actual room will typically be smaller than the product obtained by multiplying the stated length times width. All dimensions are approximate and may vary with actual construction, and all floor plans and development plans are subject to change. The size and configuration of balconies and terraces varies throughout the building. The balcony depicted above is among the larger balconies and is not reflective of the actual size or configuration of the balcony for each unit of this unit type. For the actual size and configuration of the balcony for your unit, see Exhibit "2" to the Declaration of Condominium. See legal disclaimer on back cover.