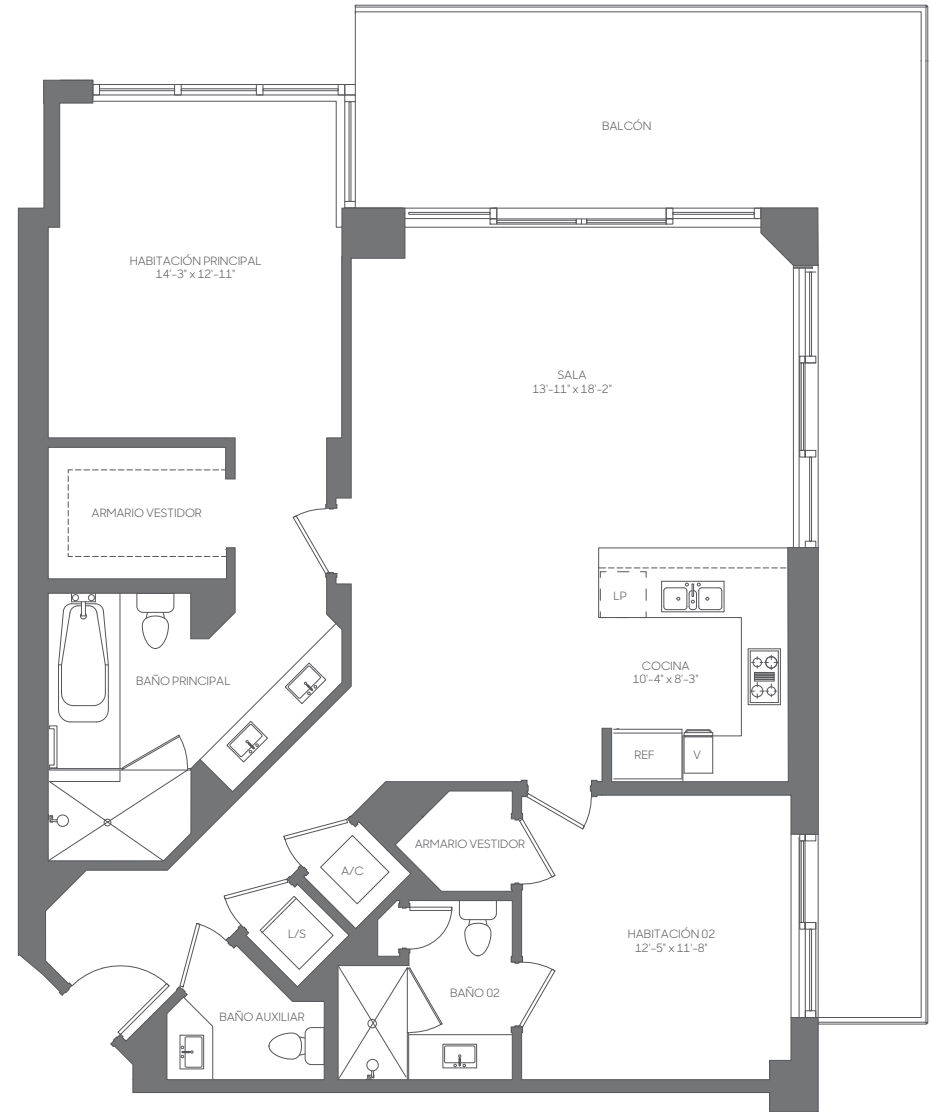
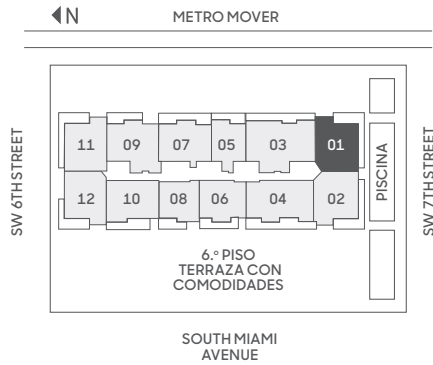




01
LÍNEA

2 DORMITORIOS | 2.5 BAÑOS
PISOS: 12, 14-36

RESIDENCIA (12, 14-20)	1,400 sq. ft.	130 sq. mt.
RESIDENCIA (21-32)	1,391 sq. ft.	129 sq. mt.
RESIDENCIA (33-36)	1,385 sq. ft.	128 sq. mt.
BALCÓN	280-411 sq. ft.	26-38 sq. mt.
TOTAL	1,665-1,802 sq. ft.	154-167 sq. mt.



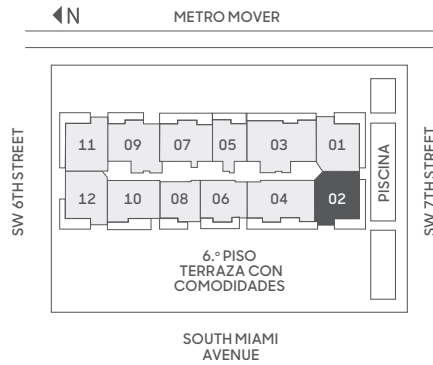
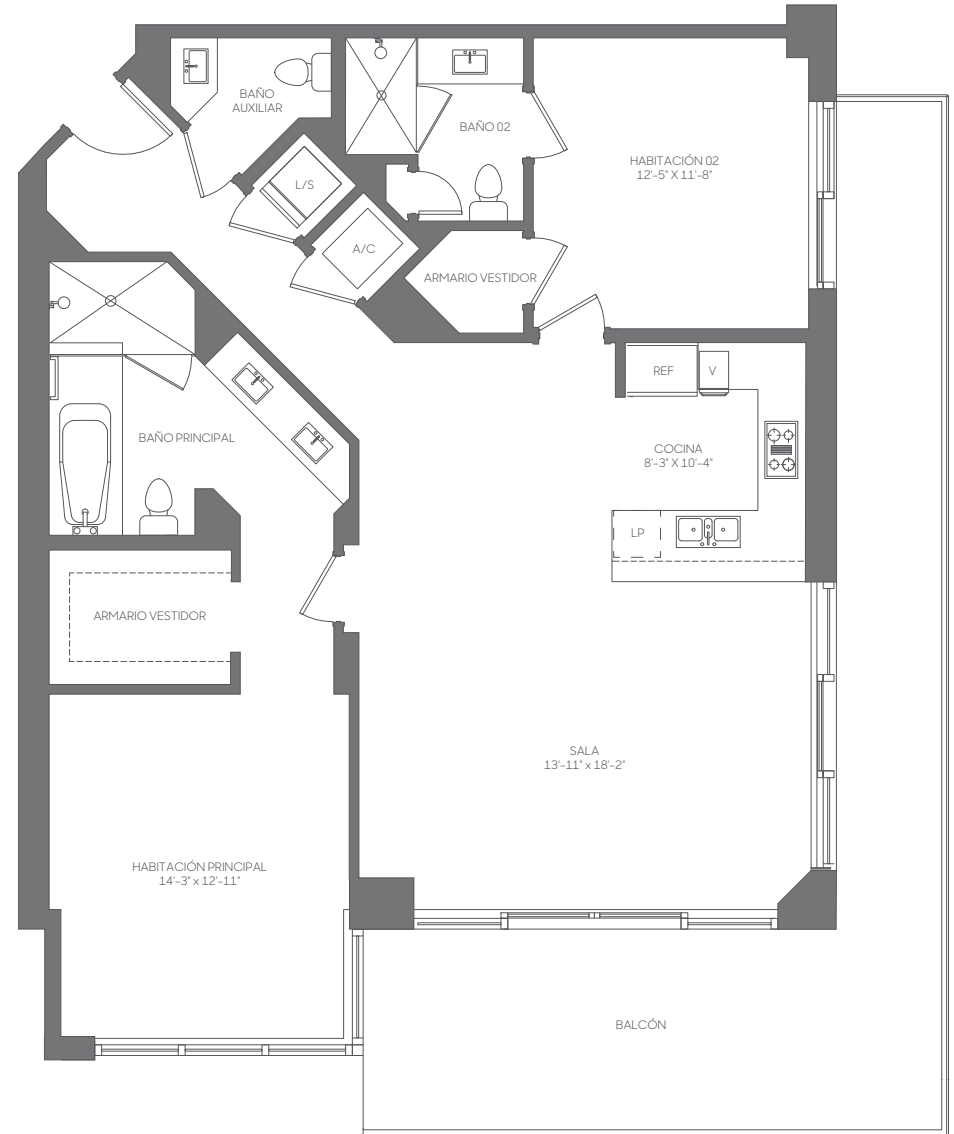
Stated dimensions are measured to the exterior boundaries of the exterior walls and the centerline of interior demising walls, including common elements such as structural walls and other interior structural components of the building, and in fact vary from the dimensions that would be determined by using the description and definition of the 'Unit' set forth in the Declaration (which generally only includes the interior airspace between the perimeter walls and excludes interior structural components). For your reference, the area of the Unit, determined in accordance with those defined unit boundaries, is 1,265 square feet. Note that measurements of rooms set forth on this floor plan are generally taken at the greatest points of each given room (as if the room were a perfect rectangle), without regard for any cutouts. Accordingly, the area of the actual room will typically be smaller than the product obtained by multiplying the stated length times width. All dimensions are approximate and may vary with actual construction, and all floor plans and development plans are subject to change. The size and configuration of balconies and terraces varies throughout the building. The balcony depicted above is among the larger balconies and is not reflective of the actual size or configuration of the balcony for each unit of this unit type. For the actual size and configuration of the balcony for your unit, see Exhibit '2' to the Declaration of Condominium. See legal disclaimer on back cover.



02
LÍNEA

2 DORMITORIOS | 2.5 BAÑOS
PISOS: 12, 14-36

RESIDENCIA (12, 14-20)	1,401 sq. ft.	130 sq. mt.
RESIDENCIA (21-32)	1,391 sq. ft.	129 sq. mt.
RESIDENCIA (33-36)	1,386 sq. ft.	128 sq. mt.
BALCÓN	280-411 sq. ft.	26-38 sq. mt.
TOTAL	1,665-1,802 sq. ft.	154-167 sq. mt.



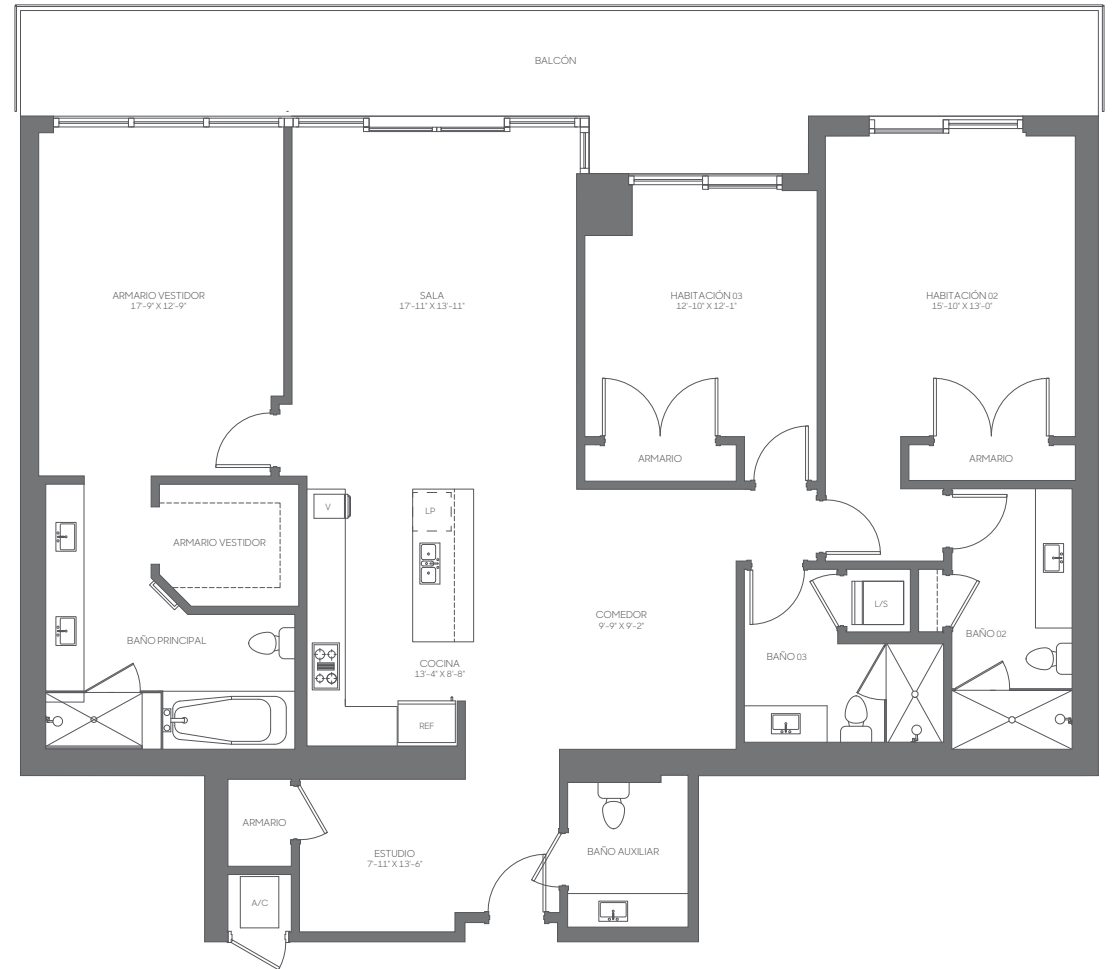
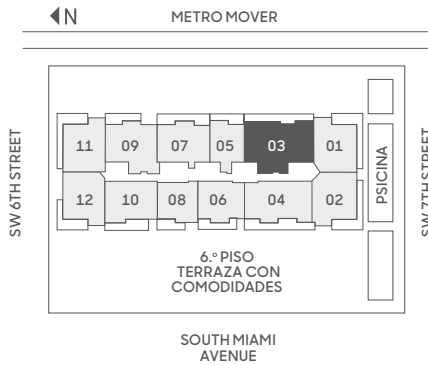
Stated dimensions are measured to the exterior boundaries of the exterior walls and the centerline of interior demising walls, including common elements such as structural walls and other interior structural components of the building, and in fact vary from the dimensions that would be determined by using the description and definition of the "Unit" set forth in the Declaration (which generally only includes the interior airspace between the perimeter walls and excludes interior structural components). For your reference, the area of the Unit, determined in accordance with those defined unit boundaries, is 1,265 square feet. Note that measurements of rooms set forth on this floor plan are generally taken at the greatest points of each given room (as if the room were a perfect rectangle), without regard for any cutouts. Accordingly, the area of the actual room will typically be smaller than the product obtained by multiplying the stated length times width. All dimensions are approximate and may vary with actual construction, and all floor plans and development plans are subject to change. The size and configuration of balconies and terraces varies throughout the building. The balcony depicted above is among the larger balconies and is not reflective of the actual size or configuration of the balcony for each unit of this unit type. For the actual size and configuration of the balcony for your unit, see Exhibit "2" to the Declaration of Condominium. See legal disclaimer on back cover.



03
LÍNEA

3 DORMITORIOS | 3.5 BAÑOS | ESTUDIO
PISOS: 10, 12, 14-41

RESIDENCIA (10, 12, 14-20)	2,057 sq. ft.	191 sq. mt.
RESIDENCIA (21-32)	2,066 sq. ft.	192 sq. mt.
RESIDENCIA (33-41)	2,083 sq. ft.	194 sq. mt.
BALCÓN	182-342 sq. ft.	17-32 sq. mt.
TOTAL	2,248-2,401 sq. ft.	209-223 sq. mt.



Stated dimensions are measured to the exterior boundaries of the exterior walls and the centerline of interior demising walls, including common elements such as structural walls and other interior structural components of the building, and in fact vary from the dimensions that would be determined by using the description and definition of the "Unit" set forth in the Declaration (which generally only includes the interior airspace between the perimeter walls and excludes interior structural components). For your reference, the area of the Unit, determined in accordance with those defined unit boundaries, is 1,856 square feet (levels 10, 12, 14-20), 1,891 square feet (levels 21-32), and 1,918 square feet (levels 33-41). Note that measurements of rooms set forth on this floor plan are generally taken at the greatest points of each given room (as if the room were a perfect rectangle), without regard for any cutouts. Accordingly, the area of the actual room will typically be smaller than the product obtained by multiplying the stated length times width. All dimensions are approximate and may vary with actual construction, and all floor plans and development plans are subject to change. The size and configuration of balconies and terraces varies throughout the building. The balcony depicted above is among the larger balconies and is not reflective of the actual size or configuration of the balcony for each unit of this unit type. For the actual size and configuration of the balcony for your unit, see Exhibit "2" to the Declaration of Condominium. See legal disclaimer on back cover.

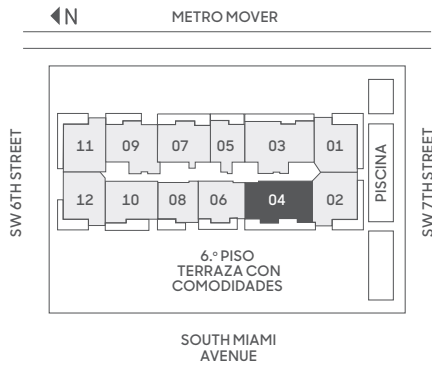
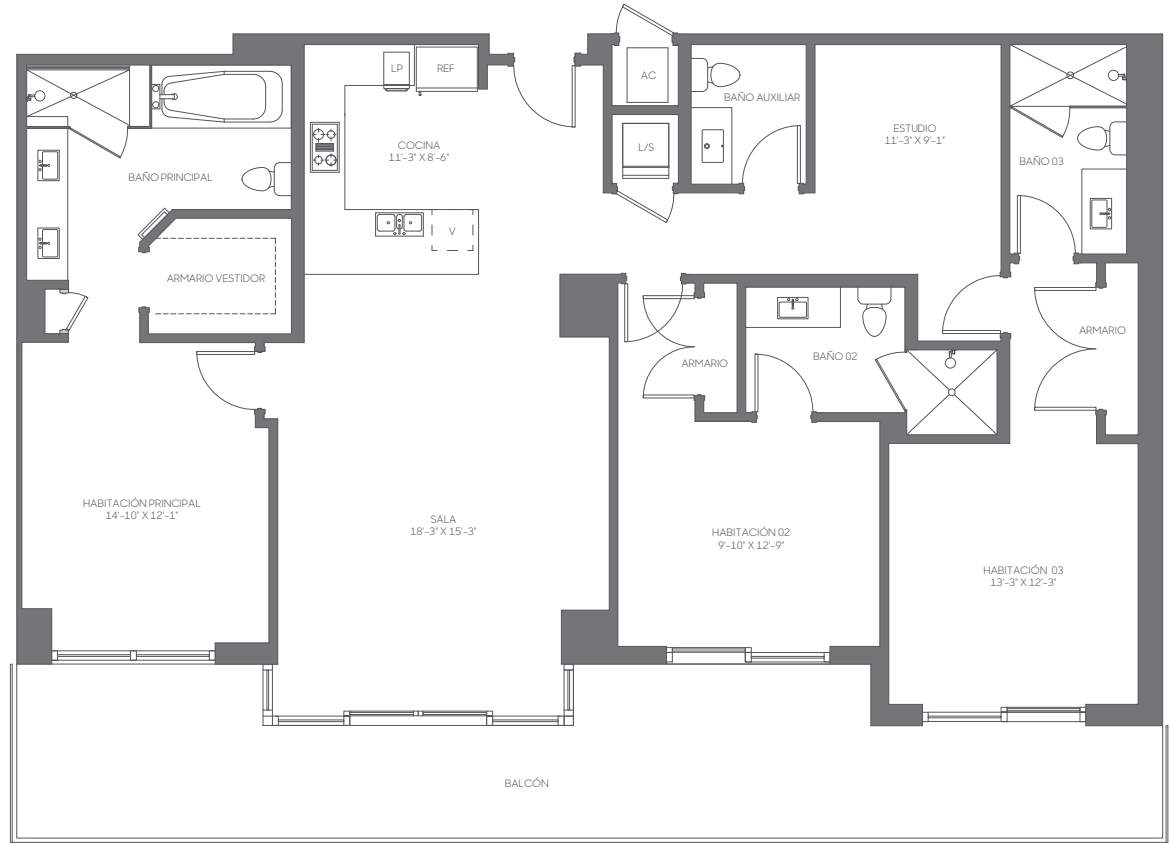


04 LÍNEA

3 DORMITORIOS | 3.5 BAÑOS | ESTUDIO

PISOS: 10, 12, 14-41

RESIDENCIA (10, 12, 14-20)	1,782 sq. ft.	166 sq. mt.
RESIDENCIA (21-32)	1,793 sq. ft.	167 sq. mt.
RESIDENCIA (33-41)	1,799 sq. ft.	167 sq. mt.
BALCÓN	207-387 sq. ft.	19-36 sq. mt.
TOTAL	2,000-2,180 sq. ft.	185-202 sq. mt.



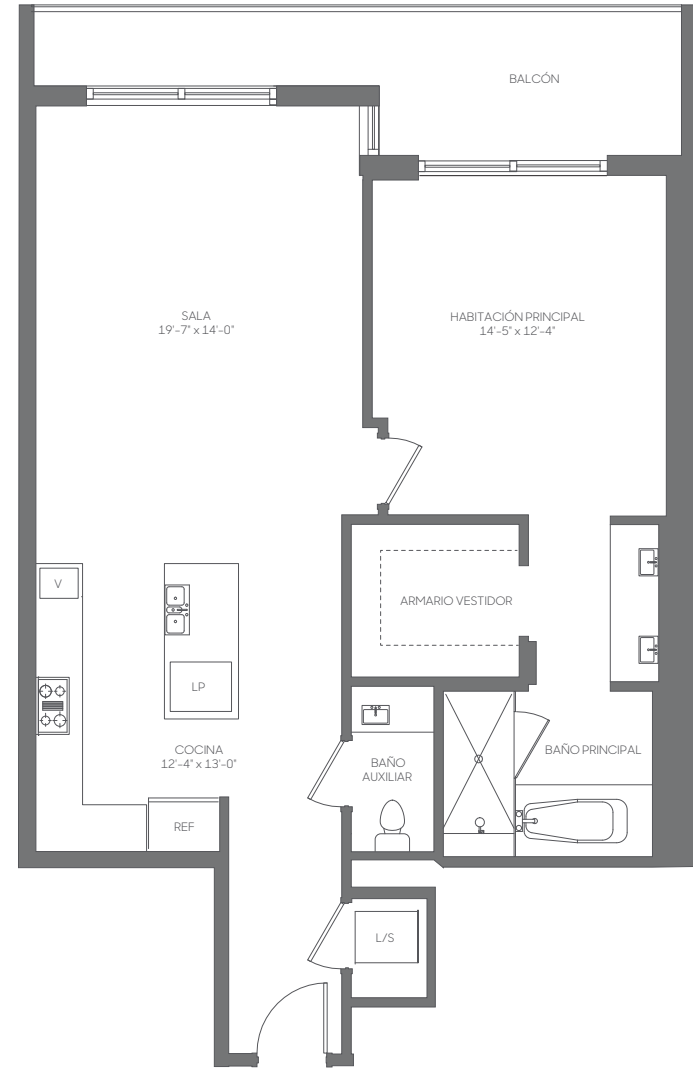
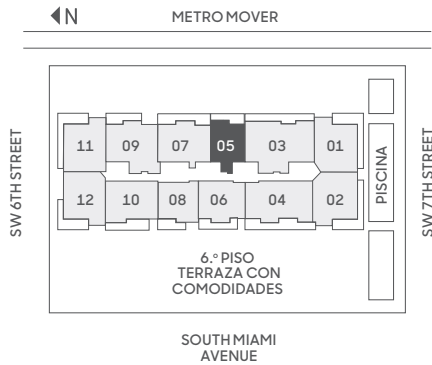
Stated dimensions are measured to the exterior boundaries of the exterior walls and the centerline of interior demising walls, including common elements such as structural walls and other interior structural components of the building, and in fact vary from the dimensions that would be determined by using the description and definition of the "Unit" set forth in the Declaration (which generally only includes the interior airspace between the perimeter walls and excludes interior structural components). For your reference, the area of the Unit, determined in accordance with those defined unit boundaries, is 1,641 square feet (levels 10, 12, 14-20), 1,660 square feet (levels 21-32), and 1,677 square feet (levels 33-41). Note that measurements of rooms set forth on this floor plan are generally taken at the greatest points of each given room (as if the room were a perfect rectangle), without regard for any cutouts. Accordingly, the area of the actual room will typically be smaller than the product obtained by multiplying the stated length times width. All dimensions are approximate and may vary with actual construction, and all floor plans and development plans are subject to change. The size and configuration of balconies and terraces varies throughout the building. The balcony depicted above is among the larger balconies and is not reflective of the actual size or configuration of the balcony for each unit of this unit type. For the actual size and configuration of the balcony for your unit, see Exhibit "2" to the Declaration of Condominium. See legal disclaimer on back cover.



05
LÍNEA

1 DORMITORIO | 1.5 BAÑOS
PISOS: 9-12, 14-41

RESIDENCIA	965 sq. ft.	90 sq. mt.
BALCÓN	72-189 sq. ft.	7-18 sq. mt.
TOTAL	1,038-1,154 sq. ft.	96-107 sq. mt.



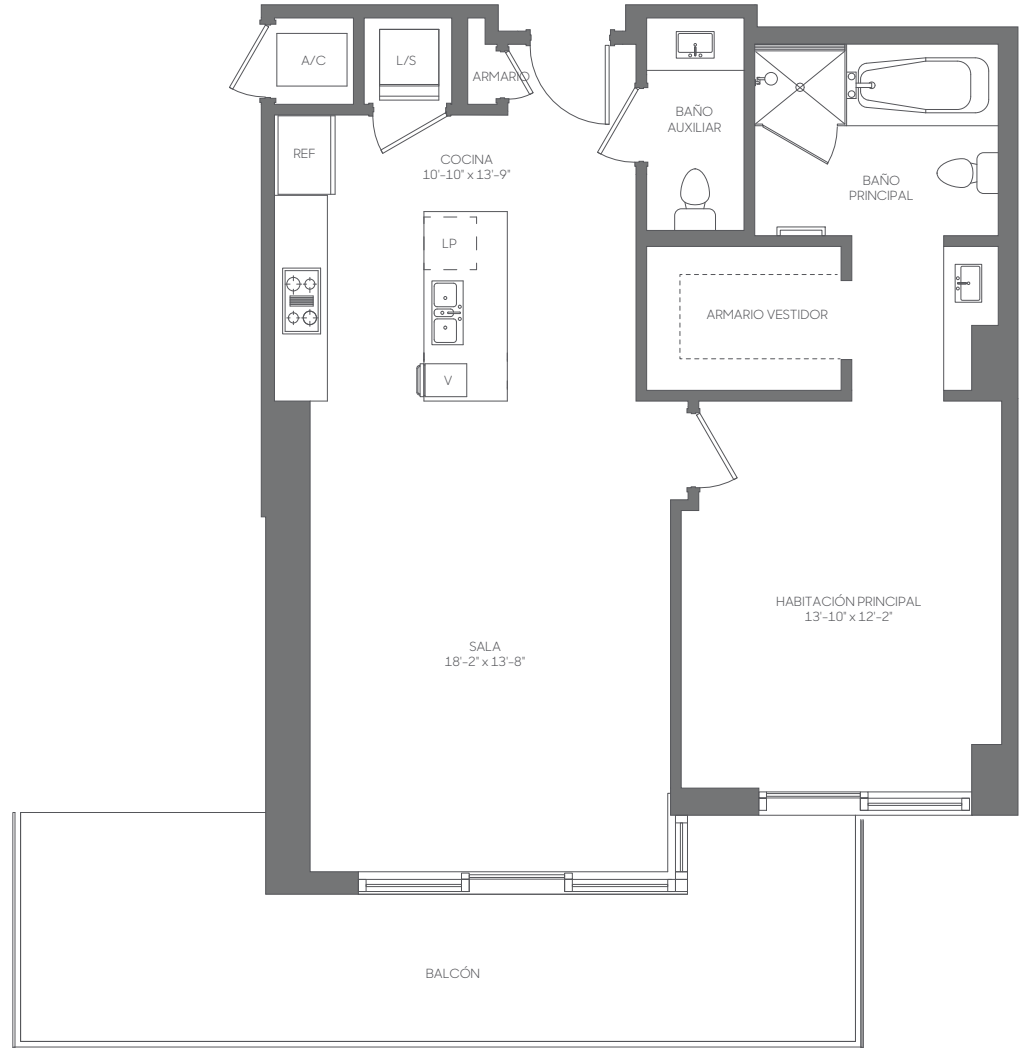
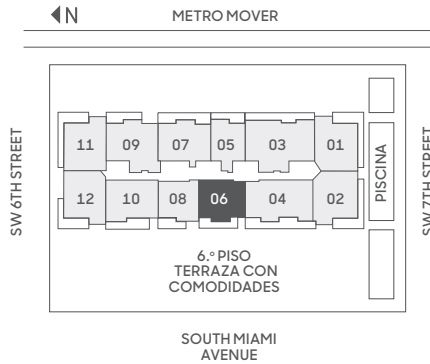
Stated dimensions are measured to the exterior boundaries of the exterior walls and the centerline of interior demising walls, including common elements such as structural walls and other interior structural components of the building, and in fact vary from the dimensions that would be determined by using the description and definition of the "Unit" set forth in the Declaration (which generally only includes the interior airspace between the perimeter walls and excludes interior structural components). For your reference, the area of the Unit, determined in accordance with those defined unit boundaries, is 878 square feet. Note that measurements of rooms set forth on this floor plan are generally taken at the greatest points of each given room (as if the room were a perfect rectangle), without regard for any cutouts. Accordingly, the area of the actual room will typically be smaller than the product obtained by multiplying the stated length times width. All dimensions are approximate and may vary with actual construction, and all floor plans and development plans are subject to change. The size and configuration of balconies and terraces varies throughout the building. The balcony depicted above is among the larger balconies and is not reflective of the actual size or configuration of the balcony for each unit of this unit type. For the actual size and configuration of the balcony for your unit, see Exhibit "2" to the Declaration of Condominium. See legal disclaimer on back cover.



06
LÍNEA

1 DORMITORIO | 1.5 BAÑOS
PISOS: 8-12, 14-41

RESIDENCIA	871 sq. ft.	81 sq. mt.
BALCÓN	137-267 sq. ft.	13-25 sq. mt.
TOTAL	1,008-1,138 sq. ft.	93-105 sq. mt.



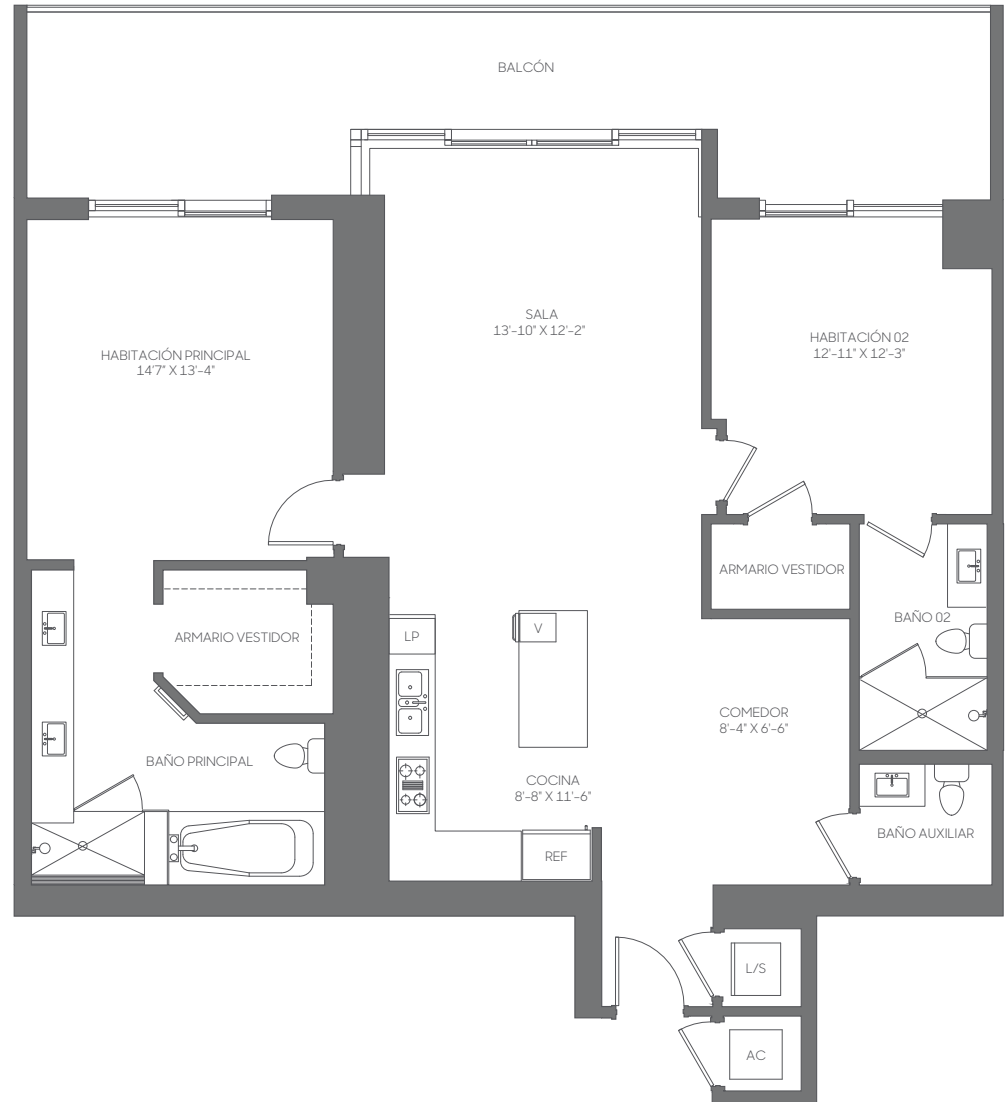
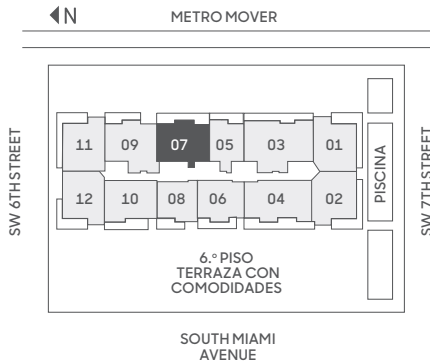
Stated dimensions are measured to the exterior boundaries of the exterior walls and the centerline of interior demising walls, including common elements such as structural walls and other interior structural components of the building, and in fact vary from the dimensions that would be determined by using the description and definition of the "Unit" set forth in the Declaration (which generally only includes the interior airspace between the perimeter walls and excludes interior structural components). For your reference, the area of the Unit, determined in accordance with those defined unit boundaries, is 810 square feet (levels 8-12, 14-32) and 812 square feet (levels 33-41). Note that measurements of rooms set forth on this floor plan are generally taken at the greatest points of each given room (as if the room were a perfect rectangle), without regard for any cutouts. Accordingly, the area of the actual room will typically be smaller than the product obtained by multiplying the stated length times width. All dimensions are approximate and may vary with actual construction, and all floor plans and development plans are subject to change. The size and configuration of balconies and terraces varies throughout the building. The balcony depicted above is among the larger balconies and is not reflective of the actual size or configuration of the balcony for each unit of this unit type. For the actual size and configuration of the balcony for your unit, see Exhibit "2" to the Declaration of Condominium. See legal disclaimer on back cover.



07
LÍNEA

2 DORMITORIOS | 2.5 BAÑOS
PISOS: 8-12, 14-41

RESIDENCIA	1,392 sq. ft.	129 sq. mt.
BALCÓN	150-306 sq. ft.	14-28 sq. mt.
TOTAL	1,542-1,698 sq. ft.	142-157 sq. mt.



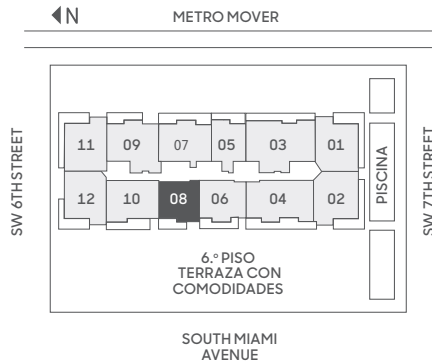
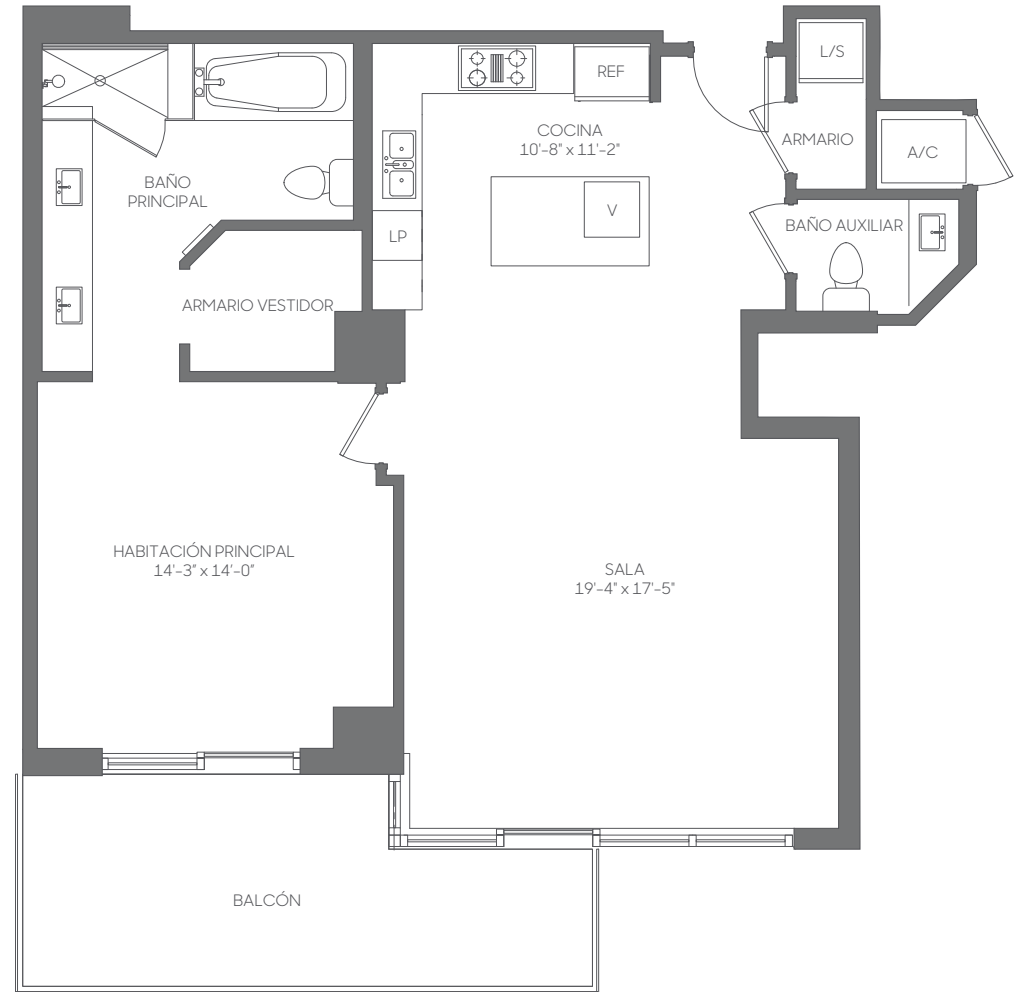
Stated dimensions are measured to the exterior boundaries of the exterior walls and the centerline of interior demising walls, including common elements such as structural walls and other interior structural components of the building, and in fact vary from the dimensions that would be determined by using the description and definition of the 'Unit' set forth in the Declaration (which generally only includes the interior airspace between the perimeter walls and excludes interior structural components). For your reference, the area of the Unit, determined in accordance with those defined unit boundaries, is 1,242 square feet (levels 8-12, 14-20), 1,244 square feet (levels 21-32), and 1,247 square feet (levels 33-41). Note that measurements of rooms set forth on this floor plan are generally taken at the greatest points of each given room (as if the room were a perfect rectangle), without regard for any cutouts. Accordingly, the area of the actual room will typically be smaller than the product obtained by multiplying the stated length times width. All dimensions are approximate and may vary with actual construction, and all floor plans and development plans are subject to change. The size and configuration of balconies and terraces varies throughout the building. The balcony depicted above is among the larger balconies and is not reflective of the actual size or configuration of the balcony for each unit of this unit type. For the actual size and configuration of the balcony for your unit, see Exhibit "2" to the Declaration of Condominium. See legal disclaimer on back cover.



08
LÍNEA

1 DORMITORIO | 1.5 BAÑOS
PISOS: 8-12, 14-41

RESIDENCIA	1,040 sq. ft.	97 sq. mt.
BALCÓN	105-219 sq. ft.	10-20 sq. mt.
TOTAL	1,145-1,259 sq. ft.	106-117 sq. mt.



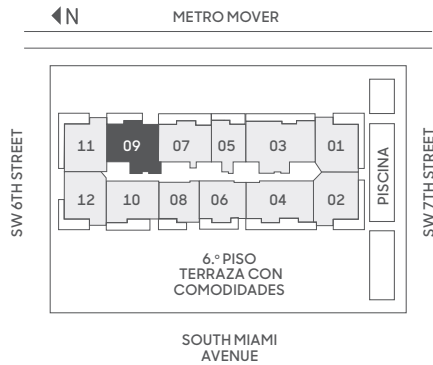
Stated dimensions are measured to the exterior boundaries of the exterior walls and the centerline of interior demising walls, including common elements such as structural walls and other interior structural components of the building, and in fact vary from the dimensions that would be determined by using the description and definition of the 'Unit' set forth in the Declaration (which generally only includes the interior airspace between the perimeter walls and excludes interior structural components). For your reference, the area of the Unit, determined in accordance with those defined unit boundaries, is 975 square feet (levels 8-12, 14-20), 976 square feet (levels 21-32) and 977 square feet (levels 33-41). Note that measurements of rooms set forth on this floor plan are generally taken at the greatest points of each given room (as if the room were a perfect rectangle), without regard for any cutouts. Accordingly, the area of the actual room will typically be smaller than the product obtained by multiplying the stated length times width. All dimensions are approximate and may vary with actual construction, and all floor plans and development plans are subject to change. The size and configuration of balconies and terraces varies throughout the building. The balcony depicted above is among the larger balconies and is not reflective of the actual size or configuration of the balcony for each unit of this unit type. For the actual size and configuration of the balcony for your unit, see Exhibit "2" to the Declaration of Condominium. See legal disclaimer on back cover.



09
LÍNEA

2 DORMITORIOS | 2.5 BAÑOS | ESTUDIO
PISOS: 8-12, 14-41

RESIDENCIA (8-10)	1,500 sq. ft.	139 sq. mt.
RESIDENCIA (11-12, 14-20)	1,490 sq. ft.	138 sq. mt.
RESIDENCIA (21-32)	1,501 sq. ft.	139 sq. mt.
RESIDENCIA (33-41)	1,526 sq. ft.	142 sq. mt.
BALCÓN	84-306 sq. ft.	8-28 sq. mt.
TOTAL	1,585-1,807 sq. ft.	147-167 sq. mt.



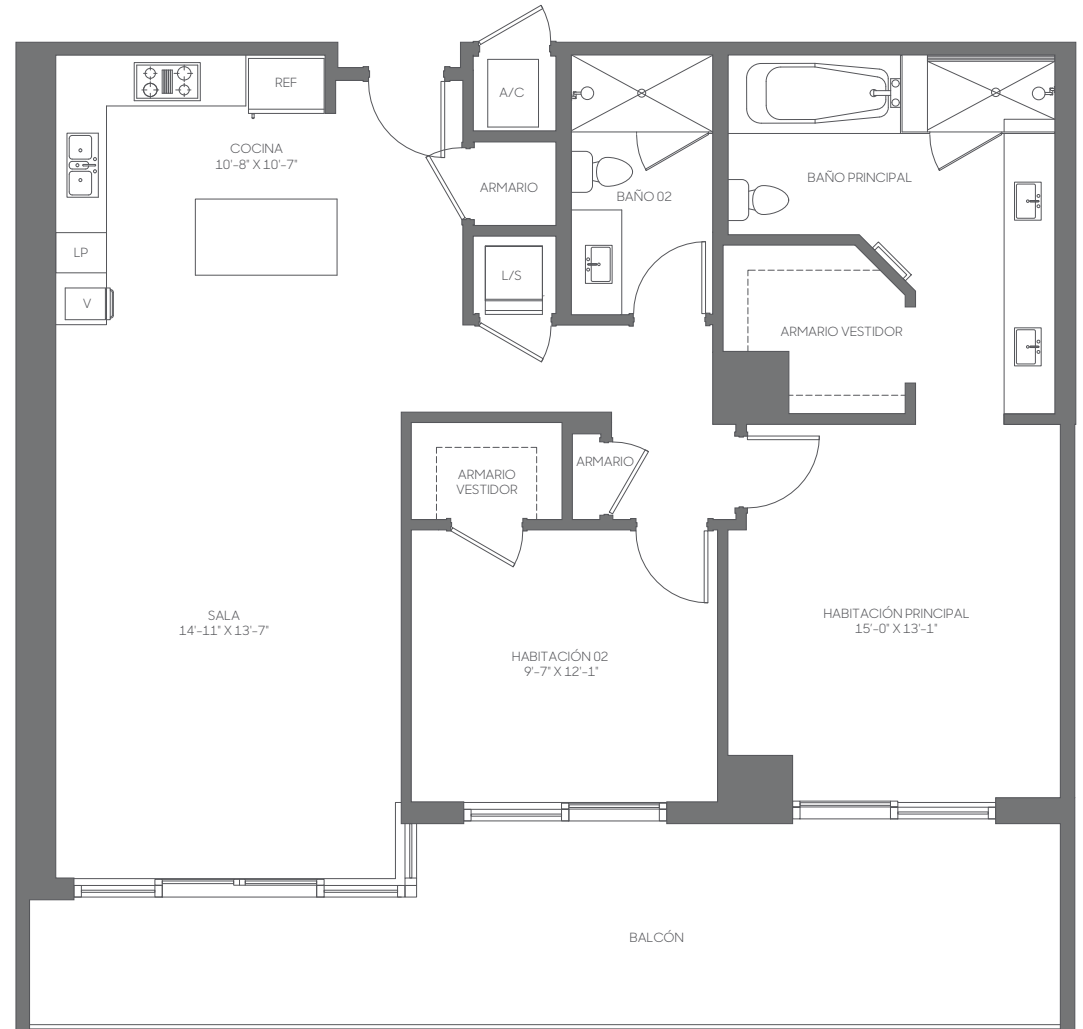
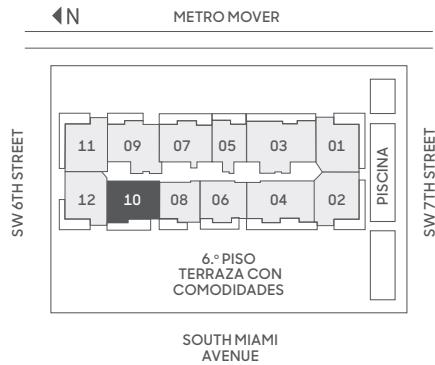
Stated dimensions are measured to the exterior boundaries of the exterior walls and the centerline of interior demising walls, including common elements such as structural walls and other interior structural components of the building, and in fact vary from the dimensions that would be determined by using the description and definition of the 'Unit' set forth in the Declaration (which generally only includes the interior airspace between the perimeter walls and excludes interior structural components). For your reference, the area of the Unit, determined in accordance with those defined unit boundaries, is 1,377 square feet (levels 8-10), 1,370 square feet (levels 11-12, 14-20), and 1,373 square feet (levels 21-32) and 1,395 (levels 33-41). Note that measurements of rooms set forth on this floor plan are generally taken at the greatest points of each given room (as if the room were a perfect rectangle), without regard for any cutouts. Accordingly, the area of the actual room will typically be smaller than the product obtained by multiplying the stated length times width. All dimensions are approximate and may vary with actual construction, and all floor plans and development plans are subject to change. The size and configuration of balconies and terraces varies throughout the building. The balcony depicted above is among the larger balconies and is not reflective of the actual size or configuration of the balcony for each unit of this unit type. For the actual size and configuration of the balcony for your unit, see Exhibit '2' to the Declaration of Condominium. See legal disclaimer on back cover.



10
LÍNEA

2 DORMITORIOS | 2 BAÑOS
PISOS: 8-12, 14-41

RESIDENCIA (8-12, 14-20)	1,307 sq. ft.	121 sq. mt.
RESIDENCIA (21-32)	1,317 sq. ft.	122 sq. mt.
RESIDENCIA (33-41)	1,323 sq. ft.	123 sq. mt.
BALCÓN	159-303 sq. ft.	15-28 sq. mt.
TOTAL	1,476-1,610 sq. ft.	137-149 sq. mt.



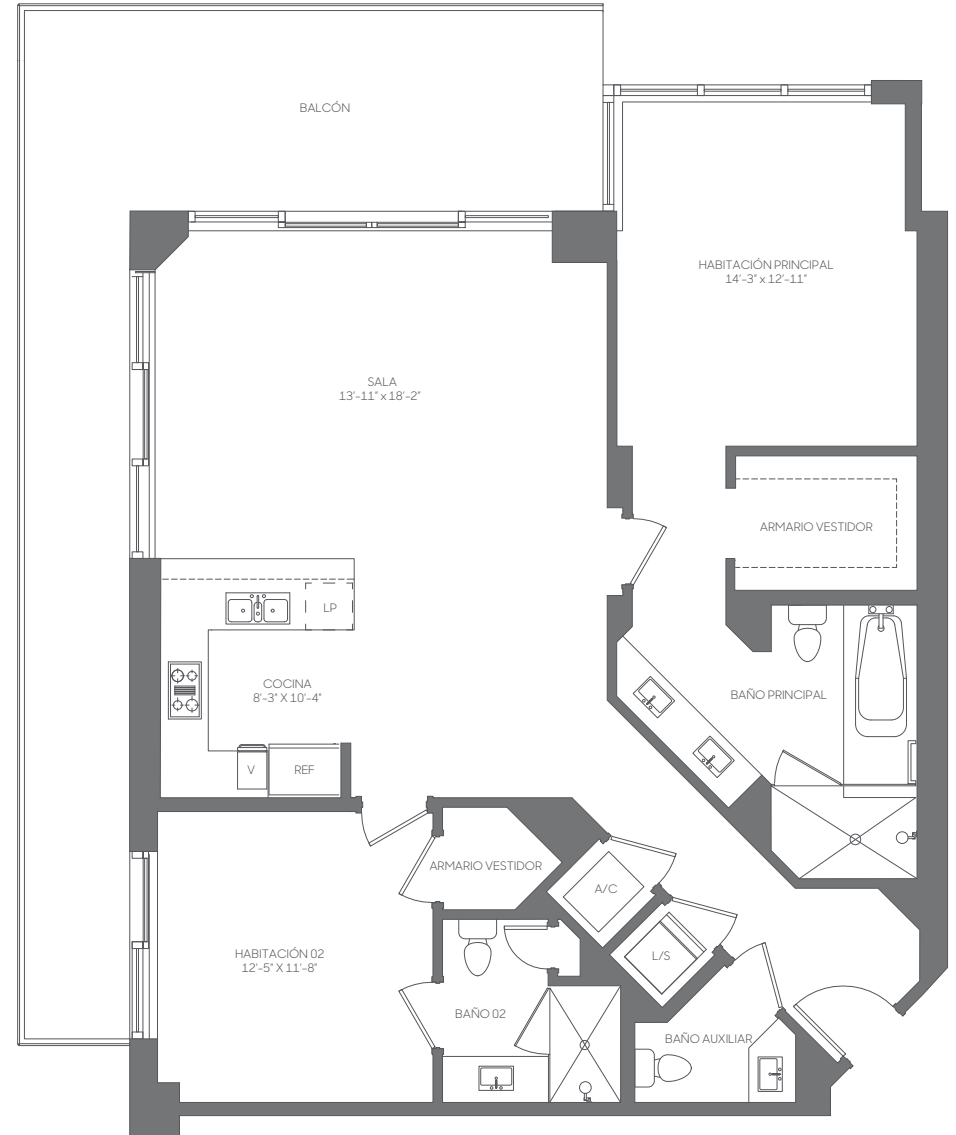
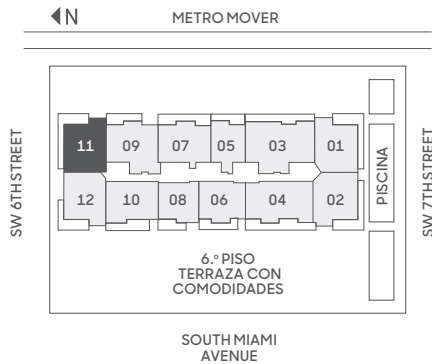
Stated dimensions are measured to the exterior boundaries of the exterior walls and the centerline of interior demising walls, including common elements such as structural walls and other interior structural components of the building, and in fact vary from the dimensions that would be determined by using the description and definition of the "Unit" set forth in the Declaration (which generally only includes the interior airspace between the perimeter walls and excludes interior structural components). For your reference, the area of the Unit, determined in accordance with those defined unit boundaries, is 1,193 square feet (levels 8-12, 14-20), 1,208 square feet (levels 21-32), and 1,219 square feet (levels 33-41). Note that measurements of rooms set forth on this floor plan are generally taken at the greatest points of each given room (as if the room were a perfect rectangle), without regard for any cutouts. Accordingly, the area of the actual room will typically be smaller than the product obtained by multiplying the stated length times width. All dimensions are approximate and may vary with actual construction, and all floor plans and development plans are subject to change. The size and configuration of balconies and terraces varies throughout the building. The balcony depicted above is among the larger balconies and is not reflective of the actual size or configuration of the balcony for each unit of this unit type. For the actual size and configuration of the balcony for your unit, see Exhibit "2" to the Declaration of Condominium. See legal disclaimer on back cover.



11
LÍNEA

2 DORMITORIOS | 2.5 BAÑOS
PISOS: 7-12, 14-36

RESIDENCIA (7-12, 14-20)	1,401 sq. ft.	130 sq. mt.
RESIDENCIA (21-32)	1,391 sq. ft.	129 sq. mt.
RESIDENCIA (33-36)	1,386 sq. ft.	128 sq. mt.
BALCÓN	280-411 sq. ft.	26-38 sq. mt.
TOTAL	1,666-1,802 sq. ft.	154-167 sq. mt.



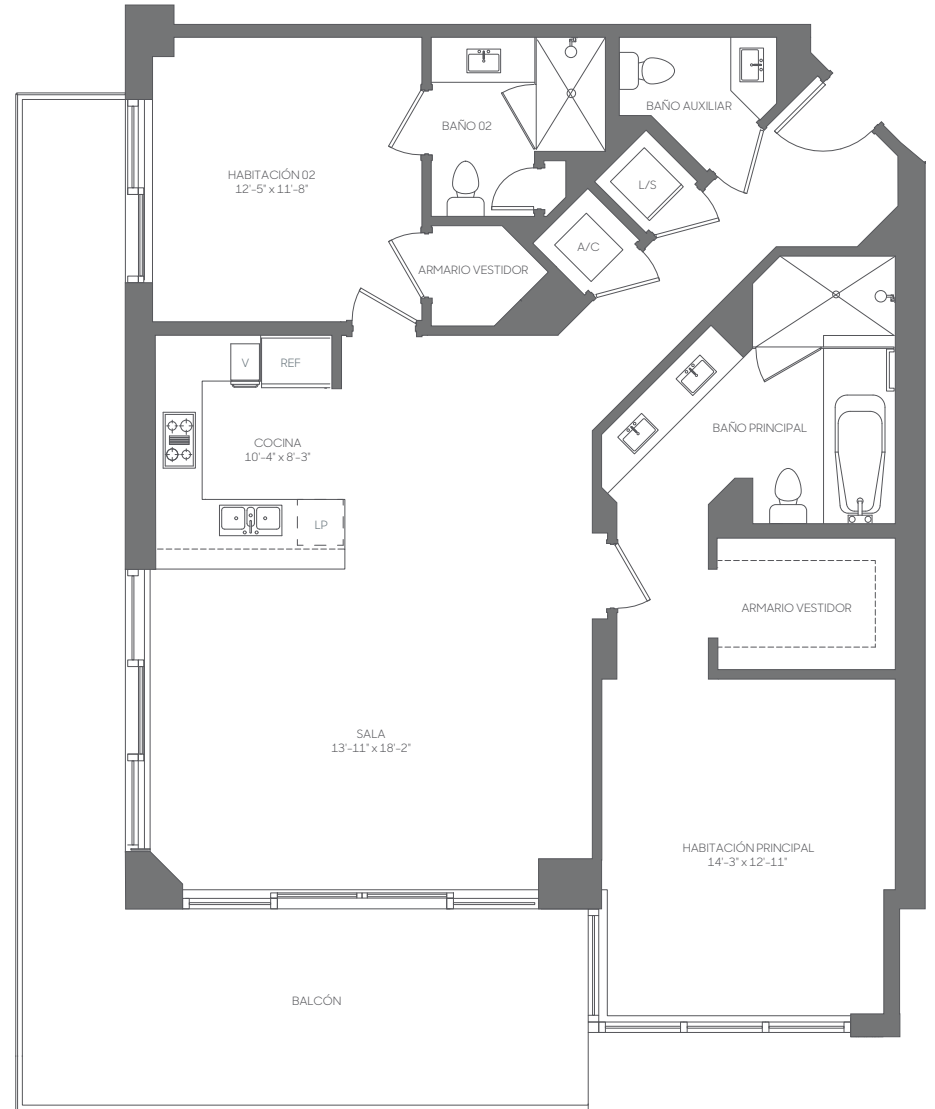
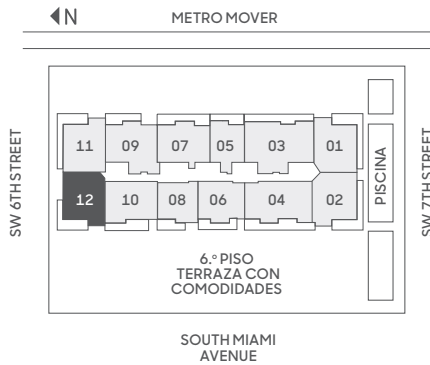
Stated dimensions are measured to the exterior boundaries of the exterior walls and the centerline of interior demising walls, including common elements such as structural walls and other interior structural components of the building, and in fact vary from the dimensions that would be determined by using the description and definition of the "Unit" set forth in the Declaration (which generally only includes the interior airspace between the perimeter walls and excludes interior structural components). For your reference, the area of the Unit, determined in accordance with those defined unit boundaries, is 1,265 square feet. Note that measurements of rooms set forth on this floor plan are generally taken at the greatest points of each given room (as if the room were a perfect rectangle), without regard for any cutouts. Accordingly, the area of the actual room will typically be smaller than the product obtained by multiplying the stated length times width. All dimensions are approximate and may vary with actual construction, and all floor plans and development plans are subject to change. The size and configuration of balconies and terraces varies throughout the building. The balcony depicted above is among the larger balconies and is not reflective of the actual size or configuration of the balcony for each unit of this unit type. For the actual size and configuration of the balcony for your unit, see Exhibit "2" to the Declaration of Condominium. See legal disclaimer on back cover.



12
LÍNEA

2 DORMITORIOS | 2.5 BAÑOS
PISOS: 7-12, 14-36

RESIDENCIA (7-12, 14-20)	1,400 sq. ft.	130 sq. mt.
RESIDENCIA (21-32)	1,391 sq. ft.	129 sq. mt.
RESIDENCIA (33-36)	1,385 sq. ft.	128 sq. mt.
BALCÓN	280-411 sq. ft.	26-38 sq. mt.
TOTAL	1,665-1,802 sq. ft.	154-167 sq. mt.



Stated dimensions are measured to the exterior boundaries of the exterior walls and the centerline of interior demising walls, including common elements such as structural walls and other interior structural components of the building, and in fact vary from the dimensions that would be determined by using the description and definition of the "Unit" set forth in the Declaration (which generally only includes the interior airspace between the perimeter walls and excludes interior structural components). For your reference, the area of the Unit, determined in accordance with those defined unit boundaries, is 1,265 square feet. Note that measurements of rooms set forth on this floor plan are generally taken at the greatest points of each given room (as if the room were a perfect rectangle), without regard for any cutouts. Accordingly, the area of the actual room will typically be smaller than the product obtained by multiplying the stated length times width. All dimensions are approximate and may vary with actual construction, and all floor plans and development plans are subject to change. The size and configuration of balconies and terraces varies throughout the building. The balcony depicted above is among the larger balconies and is not reflective of the actual size or configuration of the balcony for each unit of this unit type. For the actual size and configuration of the balcony for your unit, see Exhibit "2" to the Declaration of Condominium. See legal disclaimer on back cover.

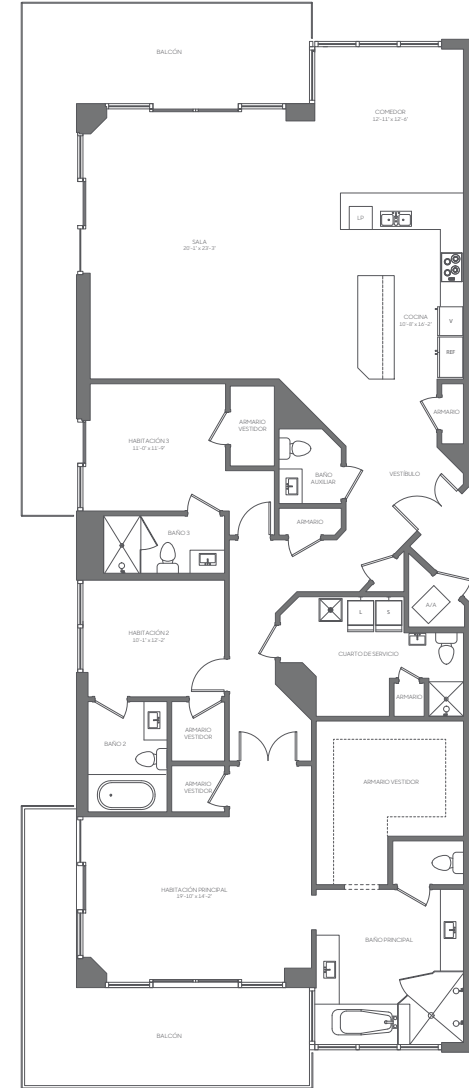
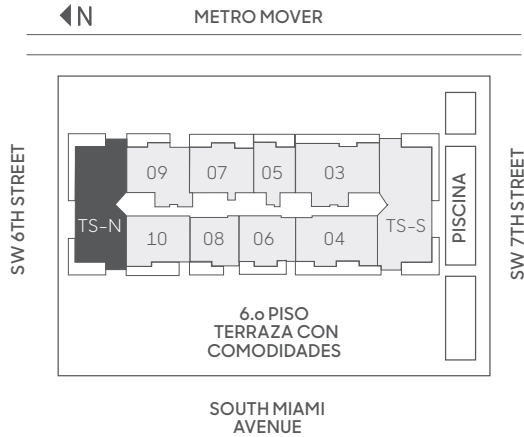


N
TOWER
SUITE

**3 DORMITORIOS | 4.5 BAÑOS
COMEDOR | LAVADERO**

PISOS: 37-41

RESIDENCIA	2,740 sq. ft.	255 sq. mt.
BALCÓN	650 sq. ft.	60 sq. mt.
TOTAL	3,390 sq. ft.	315 sq. mt.



Stated dimensions are measured to the exterior boundaries of the exterior walls and the centerline of interior demising walls, including common elements such as structural walls and other interior structural components of the building, and in fact vary from the dimensions that would be determined by using the description and definition of the "Unit" set forth in the Declaration (which generally only includes the interior airspace between the perimeter walls and excludes interior structural components). For your reference, the area of the Unit, determined in accordance with those defined unit boundaries, is 2,526 square feet. Note that measurements of rooms set forth on this floor plan are generally taken at the greatest points of each given room (as if the room were a perfect rectangle), without regard for any cutouts. Accordingly, the area of the actual room will typically be smaller than the product obtained by multiplying the stated length times width. All dimensions are approximate and may vary with actual construction, and all floor plans and development plans are subject to change. The size and configuration of balconies and terraces varies throughout the building. The balcony depicted above is among the larger balconies and is not reflective of the actual size or configuration of the balcony for each unit of this unit type. For the actual size and configuration of the balcony for your unit, see Exhibit "2" to the Declaration of Condominium. See legal disclaimer on back cover.

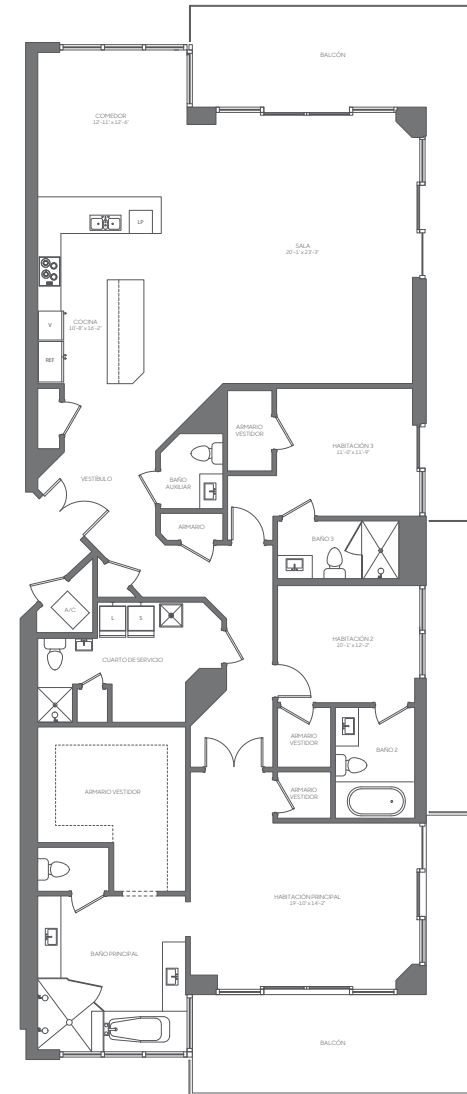
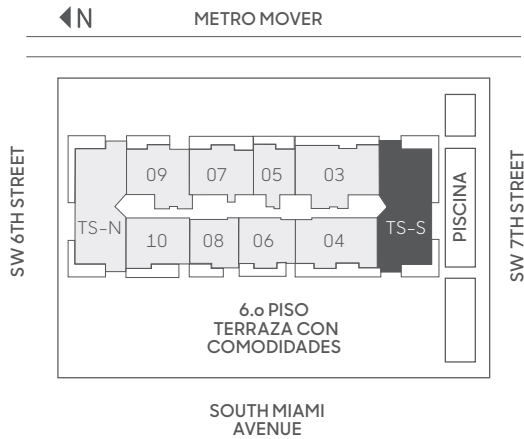


S
TOWER
SUITE

**3 DORMITORIOS | 4.5 BAÑOS
COMEDOR | LAVADERO**

PISOS: 37-41

RESIDENCIA	2,740 sq. ft.	255 sq. mt.
BALCÓN	650 sq. ft.	60 sq. mt.
TOTAL	3,390 sq. ft.	315 sq. mt.



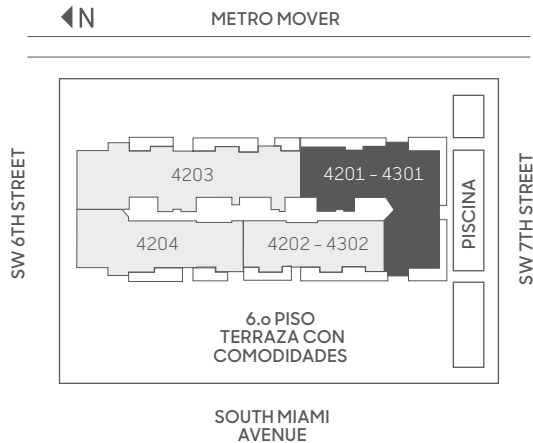
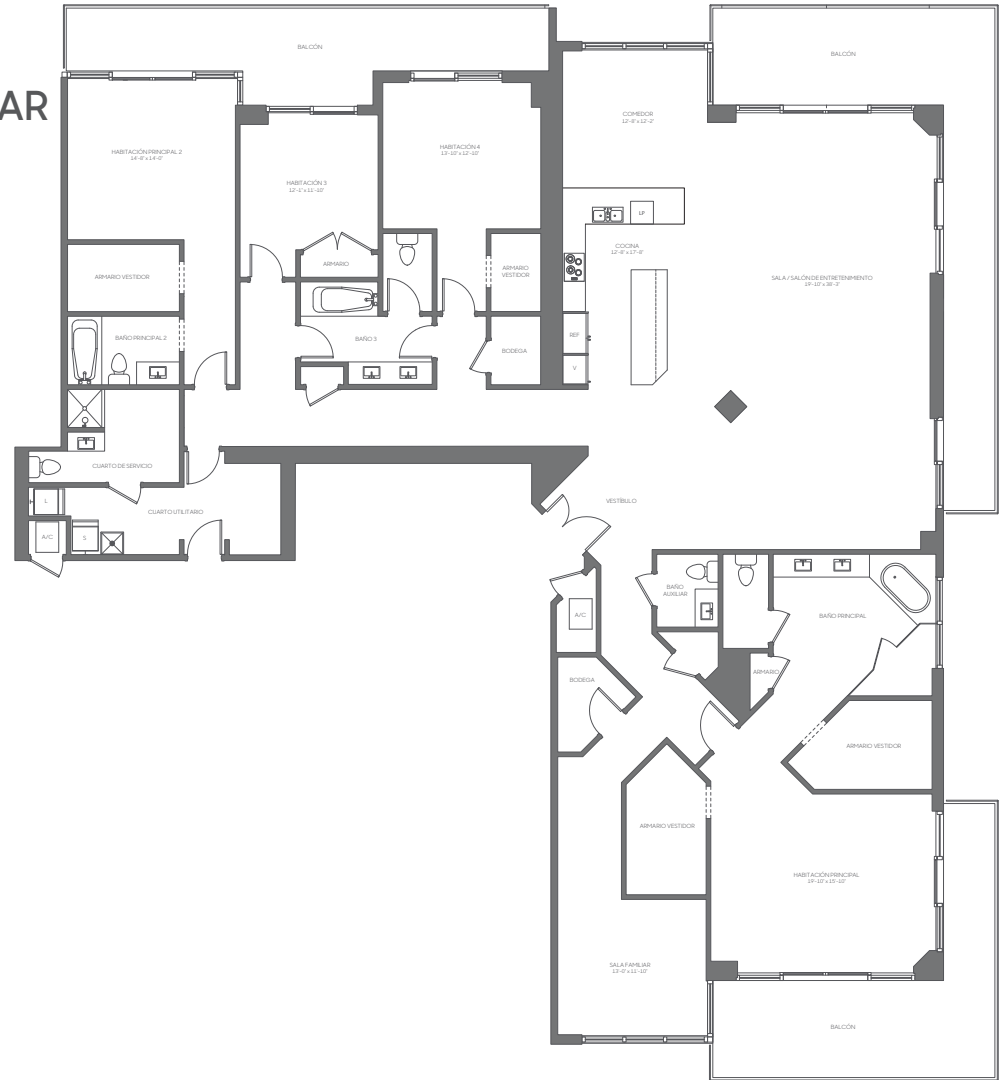
Stated dimensions are measured to the exterior boundaries of the exterior walls and the centerline of interior demising walls, including common elements such as structural walls and other interior structural components of the building, and in fact vary from the dimensions that would be determined by using the description and definition of the 'Unit' set forth in the Declaration (which generally only includes the interior airspace between the perimeter walls and excludes interior structural components). For your reference, the area of the Unit, determined in accordance with those defined unit boundaries, is 2,532 square feet. Note that measurements of rooms set forth on this floor plan are generally taken at the greatest points of each given room (as if the room were a perfect rectangle), without regard for any cutouts. Accordingly, the area of the actual room will typically be smaller than the product obtained by multiplying the stated length times width. All dimensions are approximate and may vary with actual construction, and all floor plans and development plans are subject to change. The size and configuration of balconies and terraces varies throughout the building. The balcony depicted above is among the larger balconies and is not reflective of the actual size or configuration of the balcony for each unit of this unit type. For the actual size and configuration of the balcony for your unit, see Exhibit '2' to the Declaration of Condominium. See legal disclaimer on back cover.



4201
4301
PENTHOUSE

4 DORMITORIOS | 4.5 BAÑOS
COMEDOR | LAVADERO | SALA DE ESTAR
PISOS: 42-43

RESIDENCIA	4,385 sq. ft.	407 sq. mt.
BALCÓN	917 sq. ft.	85 sq. mt.
TOTAL	5,302 sq. ft.	492 sq. mt.



Stated dimensions are measured to the exterior boundaries of the exterior walls and the centerline of interior demising walls, including common elements such as structural walls and other interior structural components of the building, and in fact vary from the dimensions that would be determined by using the description and definition of the 'Unit' set forth in the Declaration (which generally only includes the interior airspace between the perimeter walls and excludes interior structural components). For your reference, the area of the Unit, determined in accordance with those defined unit boundaries, is 4,066 square feet. Note that measurements of rooms set forth on this floor plan are generally taken at the greatest points of each given room (as if the room were a perfect rectangle), without regard for any cutouts. Accordingly, the area of the actual room will typically be smaller than the product obtained by multiplying the stated length times width. All dimensions are approximate and may vary with actual construction, and all floor plans and development plans are subject to change. The size and configuration of balconies and terraces varies throughout the building. The balcony depicted above is among the larger balconies and is not reflective of the actual size or configuration of the balcony for each unit of this unit type. For the actual size and configuration of the balcony for your unit, see Exhibit "2" to the Declaration of Condominium. See legal disclaimer on back cover.

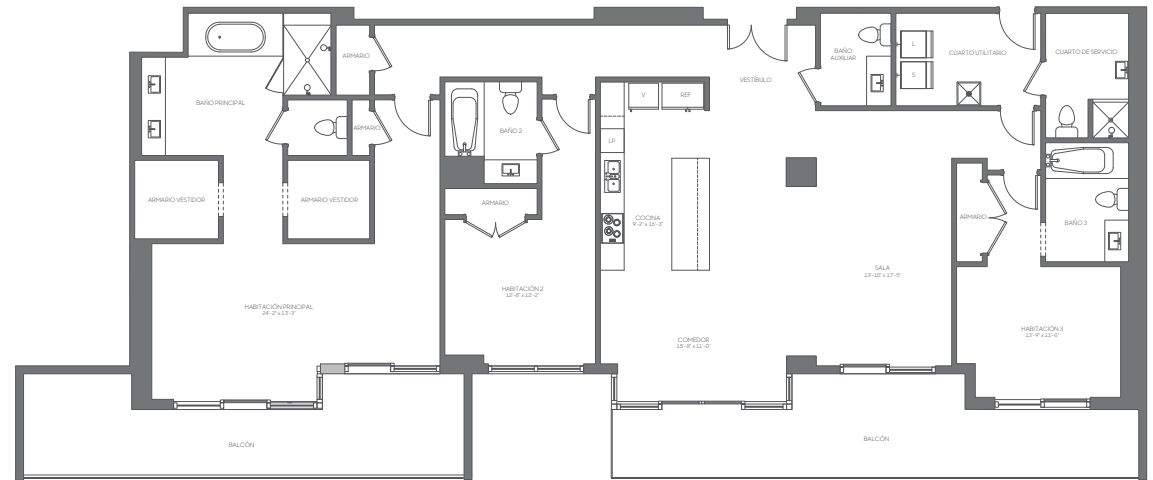
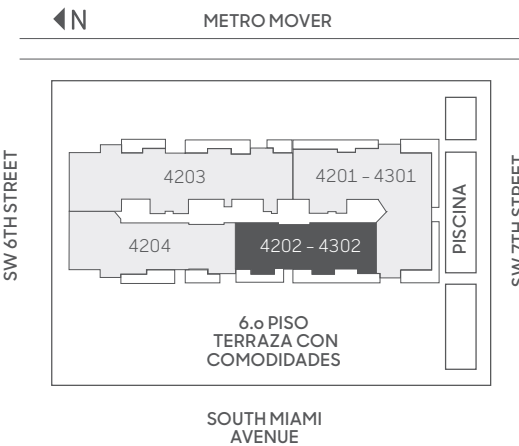


4202
4302
PENTHOUSE

3 DORMITORIOS | 4.5 BAÑOS
COMEDOR | LAVADERO

PISOS: 42-43

RESIDENCIA	2,684 sq. ft.	249 sq. mt.
BALCÓN	553 sq. ft.	51 sq. mt.
TOTAL	3,237 sq. ft.	300 sq. mt.



Stated dimensions are measured to the exterior boundaries of the exterior walls and the centerline of interior demising walls, including common elements such as structural walls and other interior structural components of the building, and in fact vary from the dimensions that would be determined by using the description and definition of the "Unit" set forth in the Declaration (which generally only includes the interior airspace between the perimeter walls and excludes interior structural components). For your reference, the area of the Unit, determined in accordance with those defined unit boundaries, is 2,505 square feet. Note that measurements of rooms set forth on this floor plan are generally taken at the greatest points of each given room (as if the room were a perfect rectangle), without regard for any cutouts. Accordingly, the area of the actual room will typically be smaller than the product obtained by multiplying the stated length times width. All dimensions are approximate and may vary with actual construction, and all floor plans and development plans are subject to change. The size and configuration of balconies and terraces varies throughout the building. The balcony depicted above is among the larger balconies and is not reflective of the actual size or configuration of the balcony for each unit of this unit type. For the actual size and configuration of the balcony for your unit, see Exhibit "2" to the Declaration of Condominium. See legal disclaimer on back cover.

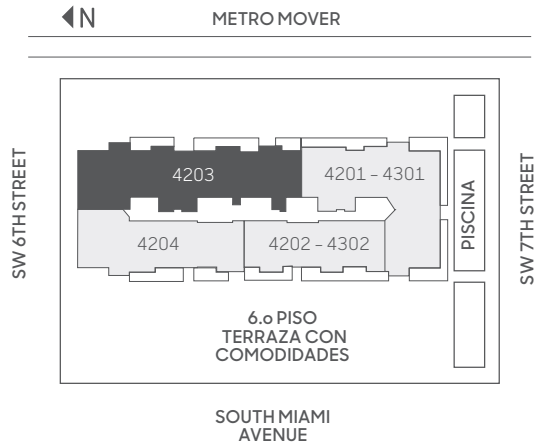
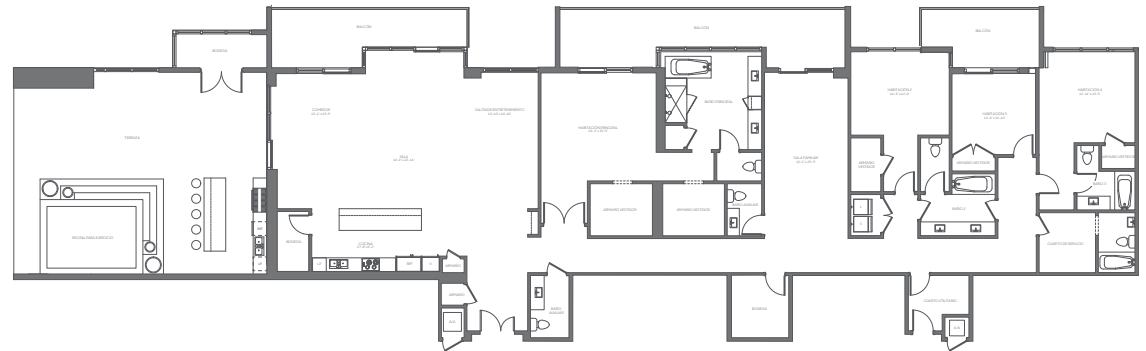


4203
PENTHOUSE

**4 DORMITORIOS | 3 BAÑOS | 2 TOCADOR
COMEDOR | SALA DE ESTAR | LAVADERO | TERRAZA**

PISO: 42

RESIDENCIA	4,346 sq. ft.	404 sq. mt.
BALCÓN	632 sq. ft.	59 sq. mt.
TERRAZA	1,191 sq. ft.	111 sq. mt.
TOTAL	6,169 sq. ft.	574 sq. mt.



Stated dimensions are measured to the exterior boundaries of the exterior walls and the centerline of interior demising walls, including common elements such as structural walls and other interior structural components of the building, and in fact vary from the dimensions that would be determined by using the description and definition of the 'Unit' set forth in the Declaration (which generally only includes the interior airspace between the perimeter walls and excludes interior structural components). For your reference, the area of the Unit, determined in accordance with those defined unit boundaries, is 4,105 square feet. Note that measurements of rooms set forth on this floor plan are generally taken at the greatest points of each given room (as if the room were a perfect rectangle), without regard for any cutouts. Accordingly, the area of the actual room will typically be smaller than the product obtained by multiplying the stated length times width. All dimensions are approximate and may vary with actual construction, and all floor plans and development plans are subject to change. The size and configuration of balconies and terraces varies throughout the building. The balcony depicted above is among the larger balconies and is not reflective of the actual size or configuration of the balcony for each unit of this unit type. For the actual size and configuration of the balcony for your unit, see Exhibit '2' to the Declaration of Condominium. See legal disclaimer on back cover.

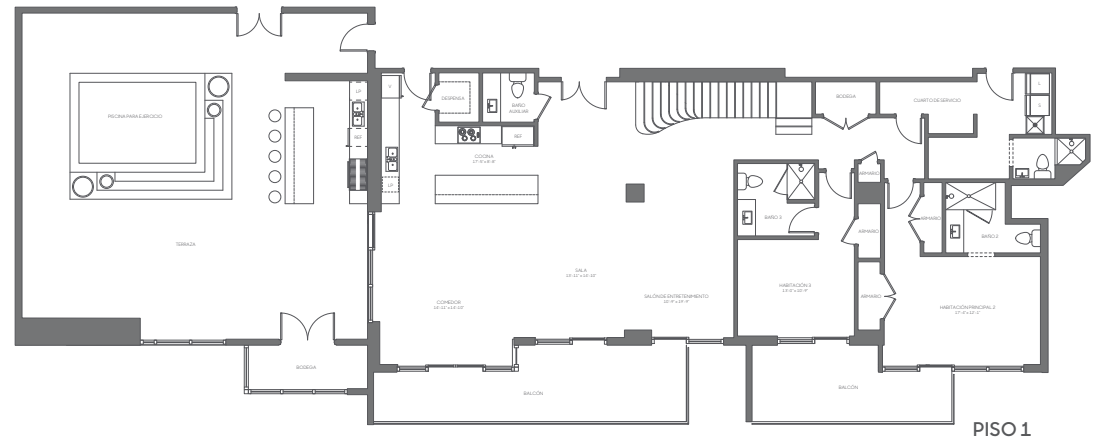
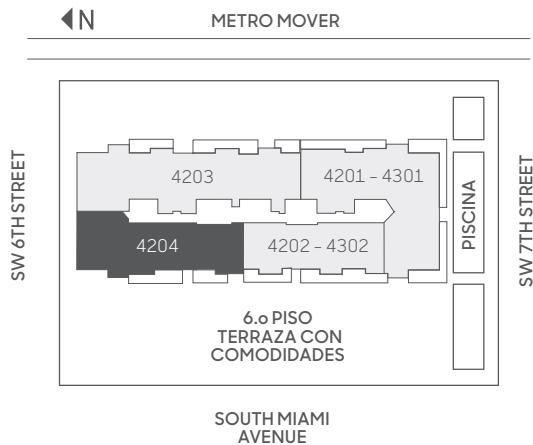
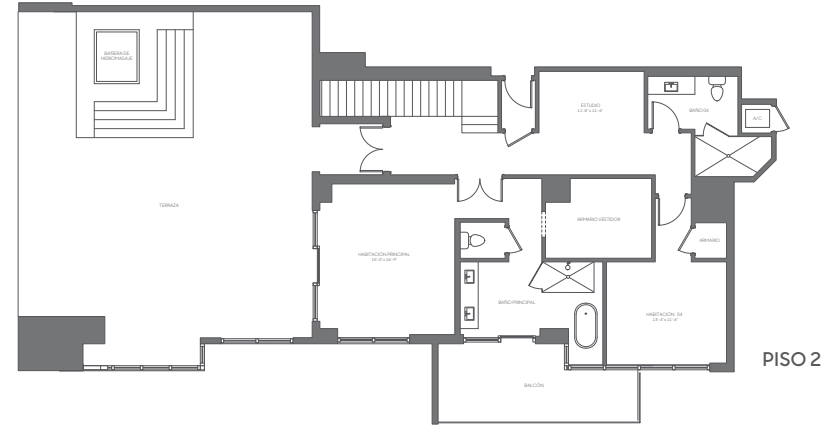


4204
PENTHOUSE

4 DORMITORIOS | 5.5 BAÑOS
COMEDOR | ESTUDIO | LAVADERO | TERRAZA

PISOS: 42 & 43

RESIDENCIA	3,933 sq. ft.	365 sq. mt.
BALCÓN	577 sq. ft.	54 sq. mt.
TERRAZA	2,814 sq. ft.	261 sq. mt.
TOTAL	7,324 sq. ft.	680 sq. mt.



Stated dimensions are measured to the exterior boundaries of the exterior walls and the centerline of interior demising walls, including common elements such as structural walls and other interior structural components of the building, and in fact vary from the dimensions that would be determined by using the description and definition of the 'Unit' set forth in the Declaration (which generally only includes the interior airspace between the perimeter walls and excludes interior structural components). For your reference, the area of the Unit, determined in accordance with those defined unit boundaries, is 3,488 square feet. Note that measurements of rooms set forth on this floor plan are generally taken at the greatest points of each given room (as if the room were a perfect rectangle), without regard for any cutouts. Accordingly, the area of the actual room will typically be smaller than the product obtained by multiplying the stated length times width. All dimensions are approximate and may vary with actual construction, and all floor plans and development plans are subject to change. The size and configuration of balconies and terraces varies throughout the building. The balcony depicted above is among the larger balconies and is not reflective of the actual size or configuration of the balcony for each unit of this unit type. For the actual size and configuration of the balcony for your unit, see Exhibit '2' to the Declaration of Condominium. See legal disclaimer on back cover.

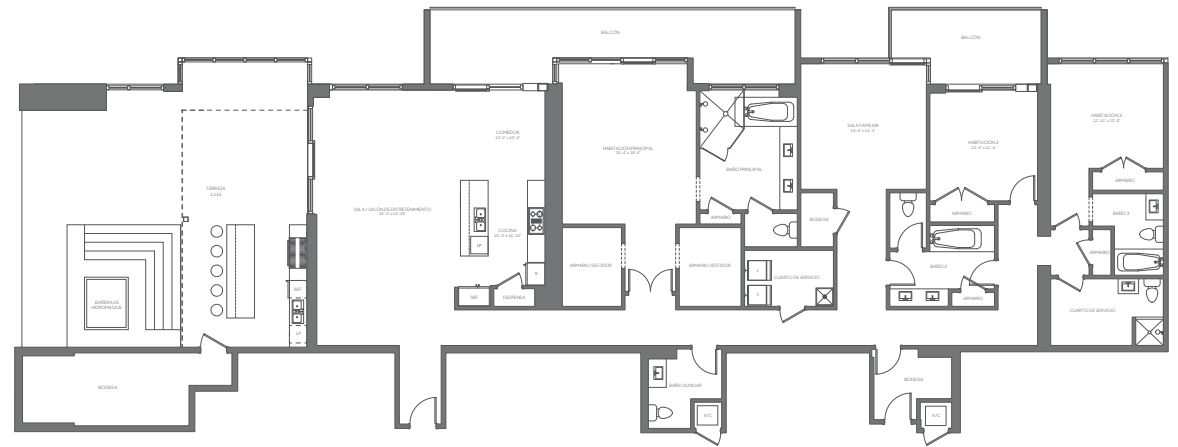
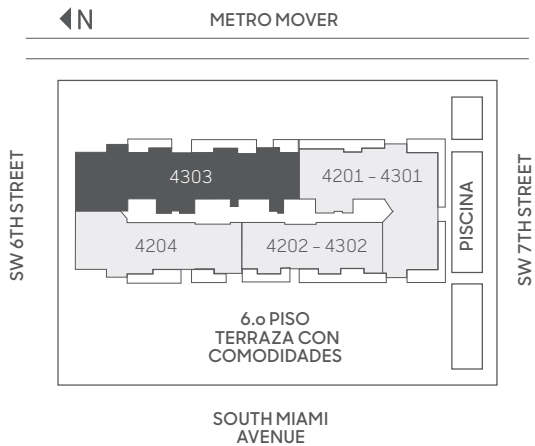


4303
PENTHOUSE

3 DORMITORIOS | 4.5 BAÑOS
COMEDOR | SALA DE ESTAR | LAVADERO | TERRAZA

PISO: 43

RESIDENCIA	3,335 sq. ft.	310 sq. mt.
BALCÓN	438 sq. ft.	41 sq. mt.
TERRAZA	1,114 sq. ft.	103 sq. mt.
TOTAL	4,887 sq. ft.	454 sq. mt.



Stated dimensions are measured to the exterior boundaries of the exterior walls and the centerline of interior demising walls, including common elements such as structural walls and other interior structural components of the building, and in fact vary from the dimensions that would be determined by using the description and definition of the "Unit" set forth in the Declaration (which generally only includes the interior airspace between the perimeter walls and excludes interior structural components). For your reference, the area of the Unit, determined in accordance with those defined unit boundaries, is 3,092 square feet. Note that measurements of rooms set forth on this floor plan are generally taken at the greatest points of each given room (as if the room were a perfect rectangle), without regard for any cutouts. Accordingly, the area of the actual room will typically be smaller than the product obtained by multiplying the stated length times width. All dimensions are approximate and may vary with actual construction, and all floor plans and development plans are subject to change. The size and configuration of balconies and terraces varies throughout the building. The balcony depicted above is among the larger balconies and is not reflective of the actual size or configuration of the balcony for each unit of this unit type. For the actual size and configuration of the balcony for your unit, see Exhibit "2" to the Declaration of Condominium. See legal disclaimer on back cover.